



Government of India  
Ministry of Earth Sciences  
Earth System Science Organisation



Earth System Science Organisation  
India Meteorological Department

## PRESS RELEASE-8

Time of issue: 1620 hours IST

Dated: 01-05-2019

**Sub: Extremely Severe Cyclonic Storm “FANI” over westcentral Bay of Bengal: Cyclone Alert for Odisha, West Bengal and Srikakulam, Vijayanagaram & Visakhapatnam Districts of Andhra Pradesh Coasts: **Yellow Message****

Yesterday’s **very severe cyclonic storm ‘FANI’** (pronounced as ‘FONI’) over southwest and adjoining southeast of Bay of Bengal (BoB) intensified into **extremely severe cyclonic storm** in the same evening (1730 IST). It moved nearly northwestwards during past 24 hours and lay centered at 1130 hours IST of today, the 1<sup>st</sup> May, 2019 over westcentral BoB near latitude 14.2°N and longitude 83.9°E, about 650 km south-southwest of Puri (Odisha), 390 km south-southeast of Vishakhapatnam (Andhra Pradesh) and 840 km south-southwest of Digha (West Bengal).

**It is very likely to move nearly northwards during next 06 hours and north-northeastwards thereafter and cross Odisha Coast between Gopalpur and Chandbali, around Puri during 3<sup>rd</sup> May afternoon with maximum sustained wind speed of 170-180 kmph gusting to 200 kmph.**

Forecast track and intensity are given in the following table:

Date/Time(IST)	Position (Lat. °N/ long. °E)	Maximum sustained surface wind speed (Kmph)	Category of cyclonic disturbance
01.05.19/1130	14.2/83.9	180-190 gusting to 210	Extremely Severe Cyclonic Storm
01.05.19/1730	14.7/83.9	180-190 gusting to 210	Extremely Severe Cyclonic Storm
01.05.19/2330	15.3/84.0	180-190 gusting to 210	Extremely Severe Cyclonic Storm
02.05.19/0530	15.9/84.1	180-190 gusting to 210	Extremely Severe Cyclonic Storm
02.05.19/1130	16.6/84.2	175-185 gusting to 205	Extremely Severe Cyclonic Storm
02.05.19/2330	17.7/84.6	170-180 gusting to 200	Extremely Severe Cyclonic Storm
03.05.19/1130	19.2/85.3	170-180 gusting to 200	Extremely Severe Cyclonic Storm
03.05.19/2330	20.9/86.4	130-140 gusting to 155	Very Severe Cyclonic Storm
04.05.19/1130	22.9/87.9	80-90 gusting to 100	Cyclonic Storm
04.05.19/2330	24.8/89.9	50-60 gusting to 70	Deep Depression
05.05.19/1130	26.8/91.9	25-35 gusting to 45	Well Marked Low

### Warnings:

#### (i) Heavy rainfall warning

- **North Andhra Pradesh:** Light to moderate rainfall at most places with heavy to very heavy rainfall at a few places and **extremely heavy falls (>20 cm)** at isolated places very likely over

Contact: Cyclone Warning Division, Office of the Director General of Meteorology,  
India Meteorological Department, Ministry of Earth Sciences.

Phone: (91) 11-24652484, FAX: (91) 11-24643128, 24623220, E-mail: cwdhq2008@gmail.com, Website: [rsmcnewdelhi.imd.gov.in](http://rsmcnewdelhi.imd.gov.in)

Spatial rainfall distribution: Isolated: <25%, A few: 26-50%, Many: 51-75%, Most: 76-100%

Rainfall amount (mm): Heavy rain: 64.5 – 115.5, Very heavy rain: 115.6 – 204.4, Extremely heavy rain: 204.5 or more.

north coastal Andhra Pradesh (Srikakulam, Visakhapatnam and Vijayanagaram Districts) on 2<sup>nd</sup> May and with heavy to very heavy rainfall at isolated places on 3<sup>rd</sup> May over same area.

- **Odisha:** Light to moderate rainfall at many places with heavy to very heavy rainfall at isolated places very likely over south coastal Odisha on 2<sup>nd</sup> May. It is likely to increase with moderate rainfall at most places and heavy to very heavy rainfall at a few places and **extremely heavy falls (>20 cm)** at isolated places over coastal Odisha & adjoining districts of interior Odisha on 3<sup>rd</sup>. Light to moderate rainfall at many places with heavy to very heavy falls at isolated places over north Odisha on 4<sup>th</sup> May.
- **West Bengal:** Light to moderate rainfall at most places with heavy falls at isolated places very likely over coastal & adjoining districts of West Bengal on 3<sup>rd</sup> and heavy to very heavy rainfall at a few places with **extremely heavy falls** at isolated places over Gangetic West Bengal and heavy falls at isolated places over Sub-Himalayan West Bengal & Sikkim on 4<sup>th</sup> May.
- **Arunachal Pradesh and Assam & Meghalaya:** Rainfall at most places with isolated heavy to very falls very likely over Arunachal Pradesh and Assam & Meghalaya on 4<sup>th</sup> and 5<sup>th</sup> May.

#### (ii) Wind warning

- Gale wind speed reaching 180-190 kmph gusting to 210 kmph is very likely to prevail over westcentral Bay of Bengal around system centre during next 36 hours and decrease thereafter.
- Strong wind speed reaching 30-40 kmph gusting to 50 kmph very likely along & off Tamilnadu coast, Comorin area, Gulf of Mannar and Kerala during next 12 hours.
- Squally wind speed reaching 40-50 kmph gusting to 60 kmph is very likely to commence along & off north Andhra Pradesh & Odisha Coasts from 2<sup>nd</sup> May and very likely to become gale wind speed reaching 60-70 kmph gusting to 85 kmph from 2<sup>nd</sup> May night and become 170-180 kmph gusting to 200 kmph along & off south Odisha Coast & adjoining districts of north Andhra Pradesh (Srikakulam District) and 90-100 kmph gusting to 115 kmph along & off remaining districts coastal Odisha and north Andhra Pradesh (Visakhapatnam and Vijayanagaram Districts) by 3<sup>rd</sup> May noon for subsequent 12 hours and decrease thereafter.
- Squally wind speed reaching 40-50 kmph gusting to 60 kmph is very likely along & off West Bengal coast on 2<sup>nd</sup> May. It would become gale wind speed reaching 60-70 kmph gusting to 85 kmph from 3<sup>rd</sup> May evening and become 90-100 kmph gusting to 115 kmph from 4<sup>th</sup> May early morning for subsequent 12 hours and decrease thereafter.

#### (iii) Sea condition

- The sea condition is phenomenal over westcentral Bay of Bengal, off north Tamilnadu, Puducherry and south Andhra Pradesh Coasts during 01-03 May 2019 and over Northwest Bay of Bengal during 02-04 May.
- Sea conditions very likely to be very rough to high along & off north Andhra Pradesh Coasts during 01-03 May and high to phenomenal along & off Odisha and West Bengal Coasts during 02-04 May.

#### (iv) Storm surge Warning

- Storm surge of about 1.5 meter height above astronomical tide is very likely to inundate low lying areas of Ganjam, Khurda, Puri & Jagatsinghpur Districts of Odisha at the time of landfall.

---

Contact: Cyclone Warning Division, Office of the Director General of Meteorology,  
India Meteorological Department, Ministry of Earth Sciences.

Phone: (91) 11-24652484, FAX: (91) 11-24643128, 24623220, E-mail: [cwdhq2008@gmail.com](mailto:cwdhq2008@gmail.com), Website: [rsmcnewdelhi.imd.gov.in](http://rsmcnewdelhi.imd.gov.in)

Spatial rainfall distribution: Isolated: <25%, A few: 26-50%, Many: 51-75%, Most: 76-100%

Rainfall amount (mm): Heavy rain: 64.5 – 115.5, Very heavy rain: 115.6 – 204.4, Extremely heavy rain: 204.5 or more.

**(v) Fishermen Warning**

- The fishermen are advised not to venture into deep sea areas of Southwest & adjoining southeast Bay of Bengal during next 12 hours; Southwest & adjoining westcentral Bay of Bengal, along & off Puducherry, north Tamilnadu & south Andhra Pradesh coasts till 1<sup>st</sup> May; westcentral Bay of Bengal, along & off north Andhra Pradesh Coast during 1-3 May and northwest & adjoining Westcentral Bay of Bengal along & off Odisha and West Bengal coasts from 2-4 May.
- Those, who are out in deep sea above areas are advised to return to the coasts.

**(vi) (a) Damage Expected and Action suggested for Ganjam, Gajapati, Khurda, Puri, Jagatsinghpur districts of Odisha.**

- (i) Extensive damage to all types of kutchha houses, some damage to old badly managed Pucca structures. Potential threat from flying objects. (ii) Extensive uprooting of communication and power poles. (iii) Disruption of rail/road link at several places. (iv) Extensive damage to standing crops, plantations, orchards. (v) Blowing down of Palm and coconut trees. (vi) Uprooting of large bushy trees. (vii) Large boats and ships may get torn from their moorings.

**Action Suggested:**

- (i) Total suspension of fishing operations. (ii) Extensive evacuation from coastal areas. (iii) Diversion or suspension of rail and road traffic. (iv) People in affected areas to remain indoors. (v) Movement in motor boats and small ships not advisable.

**(b) Damage Expected and action suggested for Kendrapara, Bhadrak, Jajpur, Balasore districts of Odisha and east & west Medinipur, south & north 24 Parganas, Howrah, Hoogli, Kolkata districts of West Bengal and Srikakulam, Visakhapatnam and Vijayanagaram districts of Andhra Pradesh**

- (i) Total destruction of thatched houses/ extensive damage to kutchha houses. Some damage to pucca houses. Potential threat from flying objects. (ii) Bending/ uprooting of power and communication poles. (iii) Major damage to Kutchha and Pucca roads. Flooding of escape routes. Minor disruption of railways, overhead powerlines and signalling systems. (iv) Widespread damage to standing crops, plantations, orchards, falling of green coconuts and tearing of palm fronds. Blowing down of bushy trees like mango. (v) Small boats, country crafts may get detached from moorings. (vi) Visibility severely affected.

**Action Suggested:**

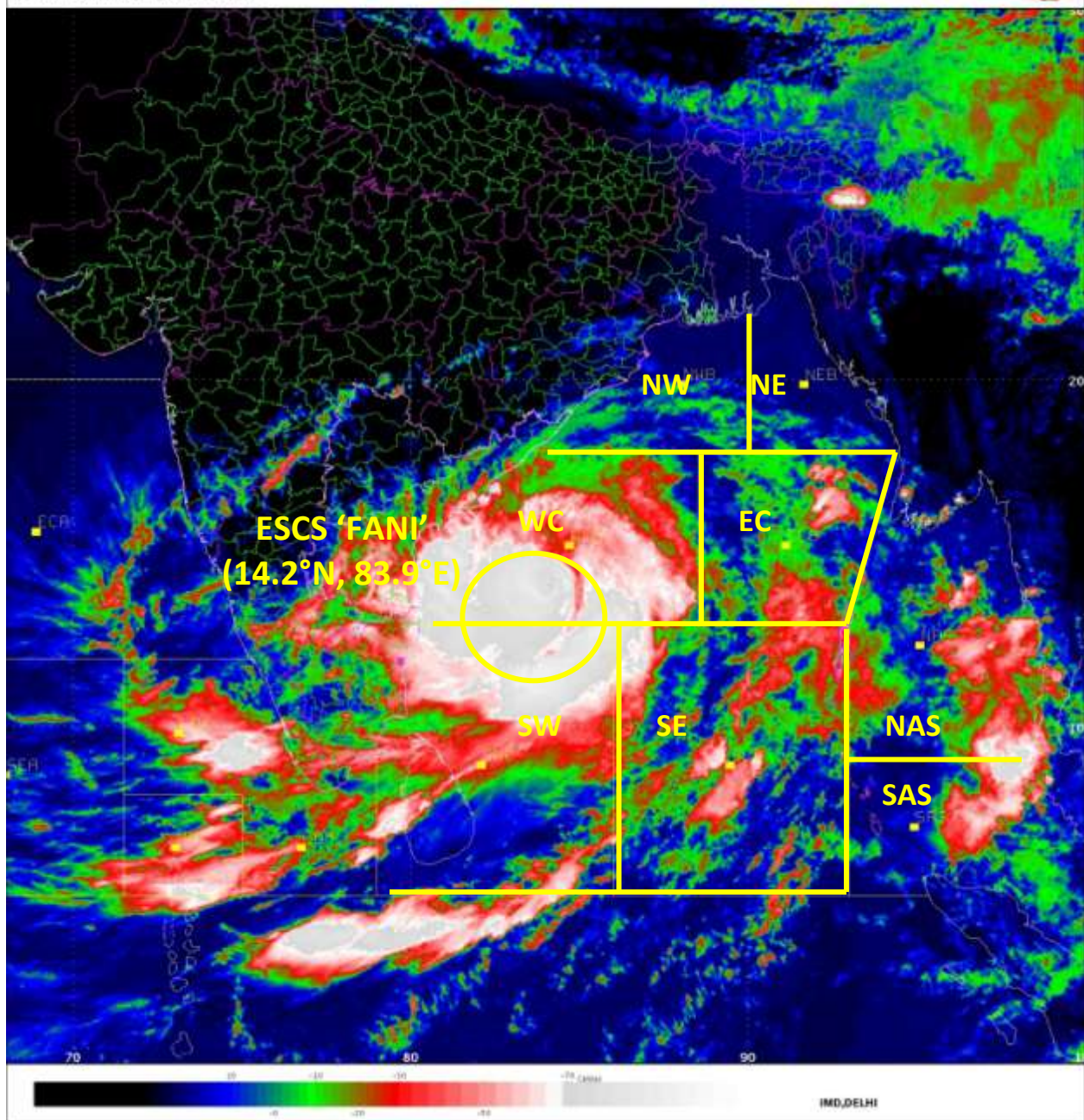
- (i) Total suspension of fishing operations. Mobilise evacuation from coastal areas. (ii) Judicious regulation of rail and road traffic. (iii) People in affected areas to remain indoors. (iv) Movement in motor boats and small ships unsafe.

The system is under continuous surveillance and concerned state governments are being informed regularly.

Kindly visit [www.imd.gov.in](http://www.imd.gov.in) and [www.rsmcnewdelhi.imd.gov.in](http://www.rsmcnewdelhi.imd.gov.in) for updates on the system.

SAT INSAT-3D  
IMG.TIR1\_TEMP 10.8 um  
SECTOR BAYOFBENGAL Mercator (NHC LUT)

01-05-2019/06:30 GMT  
01-05-2019/12:00 IST



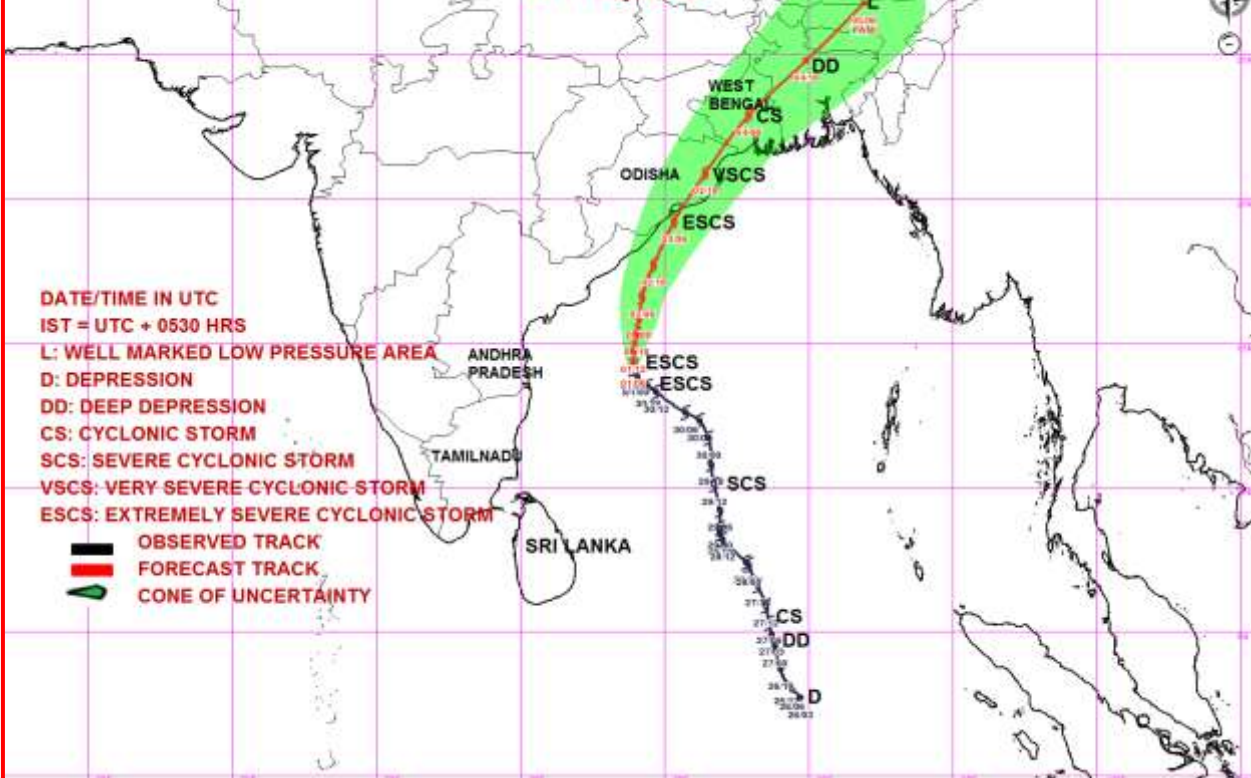
Contact: Cyclone Warning Division, Office of the Director General of Meteorology,  
India Meteorological Department, Ministry of Earth Sciences.

Phone: (91) 11-24652484, FAX: (91) 11-24643128, 24623220, E-mail: [cwdhq2008@gmail.com](mailto:cwdhq2008@gmail.com), Website: [rsmcnewdelhi.imd.gov.in](http://rsmcnewdelhi.imd.gov.in)

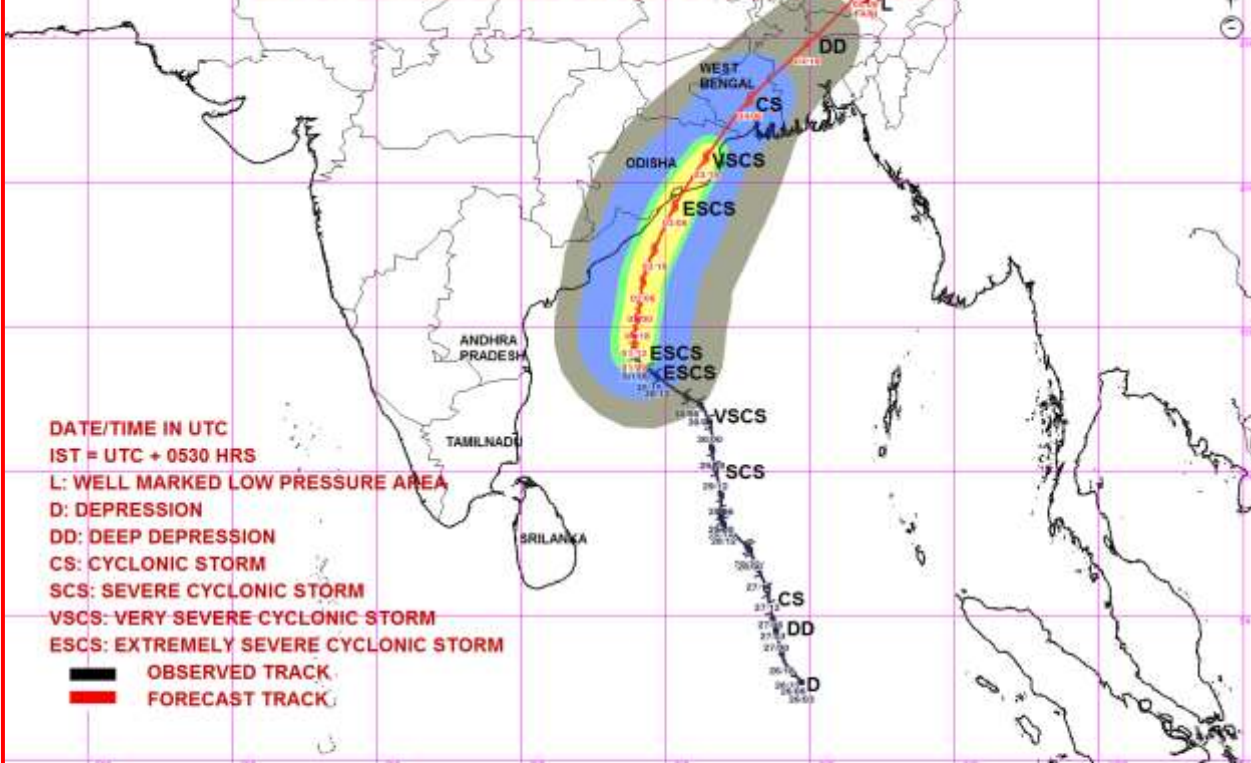
Spatial rainfall distribution: Isolated: <25%, A few: 26-50%, Many: 51-75%, Most: 76-100%

Rainfall amount (mm): Heavy rain: 64.5 – 115.5, Very heavy rain: 115.6 – 204.4, Extremely heavy rain: 204.5 or more.

**OBSERVED AND FORECAST TRACK ALONG WITH CONE OF UNCERTAINTY IN ASSOCIATION WITH EXTREMELY SEVERE CYCLONIC STORM "FANI" OVER WESTCENTRAL BAY OF BENGAL BASED ON 0600 UTC OF 1<sup>st</sup> May, 2019**



**OBSERVED & FORECAST TRACK ALONGWITH QUADRANT WIND DISTRIBUTION IN ASSOCIATION WITH EXTREMELY SEVERE CYCLONIC STORM "FANI" OVER WESTCENTRAL BAY OF BENGAL BASED ON 0600 UTC OF 1<sup>st</sup> May, 2019**



MSW(knot/kmph)	Impact	Action
28-33 (51-62)	Very rough seas.	Total suspension of fishing operations
34-49/(63-91)	High to very high seas	Total suspension of fishing operations
50-63/(92-117)	Very High seas	Total suspension of fishing operations
≥ 64 (≥118)	Phenomenal	Total suspension of fishing operations

Contact: Cyclone Warning Division, Office of the Director General of Meteorology, India Meteorological Department, Ministry of Earth Sciences.

Phone: (91) 11-24652484, FAX: (91) 11-24643128, 24623220, E-mail: cwdhq2008@gmail.com, Website: [rsmcnewdelhi.imd.gov.in](http://rsmcnewdelhi.imd.gov.in)

Spatial rainfall distribution: Isolated: <25%, A few: 26-50%, Many: 51-75%, Most: 76-100%

Rainfall amount (mm): Heavy rain: 64.5 – 115.5, Very heavy rain: 115.6 – 204.4, Extremely heavy rain: 204.5 or more.