



सत्यमेव जयते
Government of India
Ministry of Earth Sciences
Earth System Science Organisation



Earth System Science Organisation
India Meteorological Department

PRESS RELEASE

Time of issue: 1700 hours IST

Dated:17-12-2018

Sub: Cyclonic Storm 'PHETHAI' crossed Andhra Pradesh coast close to south of Yanam: Cyclone Warning for Andhra Pradesh & Yanam (Puducherry) Coasts "RED MESSAGE"

Yesterday's cyclonic storm "PHETHAI" over southwest & adjoining westcentral Bay of Bengal (BoB) moved north-northwestwards and intensified into severe cyclonic storm over westcentral and adjoining southwest BoB in the same evening. Moving further north-northwestwards, it weakened into a cyclonic storm in the morning (0830 hrs IST) of today, the 17th December. Thereafter moving nearly northwards, it crossed Andhra Pradesh coast near 16.55°N/82.25°E, 25 km south of Yanam and 40 km south of Kakinada between 1330 to 1430 hours IST of today, the 17th December, 2018. It lay centred at 1430 hrs IST of 17th December, 2018 over coastal Andhra Pradesh, near latitude 16.7°N and longitude 82.3°E, close to Yanam and 25 km south of Kakinada.

It is very likely to move northeastwards and emerge into westcentral Bay of Bengal off Kakinada coast during next 3 hours. Thereafter, it is very likely to continue to move northeastwards, weaken further and again cross Andhra Pradesh coast close to Tuni during late evening of today, the 17th December, 2018 as a Deep Depression with a wind speed of 55-65 kmph gusting 75 kmph.

Cyclone 'PHETHAI' is being tracked by DWR Machilipatnam and Vishakhapatnam apart from Satellite and other observations.

Forecast track and intensity are given in the following table:

Date/Time(IST)	Position (Lat.°N/ long. °E)	Maximum sustained surface wind speed (Kmph)	Category of cyclonic disturbance
17.12.18/1430	16.7/82.3	70-80 gusting to 90	Cyclonic Storm
17.12.18/1730	17.0/82.5	55-65 gusting to 75	Deep Depression
17.12.18/2330	17.8/83.0	40-60 gusting to 70	Depression
18.12.18/0530	18.4/83.5	20-30 gusting to 40	Low

Warnings:

(i) Heavy rainfall warning

Region	17 December 2018*
Coastal Andhra Pradesh and Yanam district	Rainfall at most places with heavy to very heavy falls at isolated places
Odisha	Rainfall most places with isolated heavy falls
Jharkhand	Rainfall at many places with isolated heavy falls
Chhattisgarh	Rainfall at most places with isolated heavy falls over south Chhattisgarh
Gangetic West Bengal	Rainfall at most places with isolated heavy falls

Legends: **Red-Take Action**; **Orange- Be prepared**; **Yellow- be updated**; **Green: No warning**

Note 1: * Rainfall till 0830 IST of next day. **Note 2: Red colour warning means take action. It does not mean red alert.**

Contact: Cyclone Warning Division, Office of the Director General of Meteorology, India Meteorological Department, Ministry of Earth Sciences.

Phone: (91) 11-24652484, FAX: (91) 11-24643128, 24623220, E-mail:cwdhq2008@gmail.com, Website:

rsmcnewdelhi.imd.gov.in

Spatial rainfall distribution: Isolated: <25%, A few: 26-50%, Many: 51-75%, Most: 76-100%

Rainfall amount (mm): Heavy rain: 64.5 – 115.5, Very heavy rain: 115.6 – 204.4, Extremely heavy rain: 204.5 or more.

(ii) Wind warning for Andhra Pradesh and south Odisha coasts

- Gale wind speed reaching 65-75 kmph gusting to 85 kmph very likely along & off central Andhra Pradesh coast (**East & west Godavari, Vishakhapatnam, Krishna Districts) and Yanam district of Puducherry** during next 03 hours. Strong wind speed reaching 50-60 kmph gusting to 70 kmph is likely to prevail during subsequent 09 hours.
- Strong wind speed reaching 30-40 kmph gusting to 50 kmph likely along & off South Odisha coast on 17th.

(iii) Wind warning for Sea areas

- Gale wind speed reaching 65-75 kmph gusting to 85 kmph prevails over westcentral Bay of Bengal off north Andhra Pradesh Coast during next 03 hours and 50-60 kmph gusting to 70 kmph is likely to prevail during subsequent 09 hours.
- Strong wind speed reaching 30-40 kmph gusting to 50 kmph likely over northwest Bay of Bengal on today, the 17th December.

(iv) Sea condition

The sea condition is high over westcentral Bay of Bengal near system centre. The sea condition is very likely to be rough to very rough over westcentral Bay of Bengal and along & off north coastal Andhra Pradesh and Yanam district of Puducherry during subsequent 09 hours.

(v) Damage Expected over Coastal Andhra Pradesh (East & west Godavari and Vishakhapatnam Districts) and Yanam district of Puducherry during next 3 hours:

Damage to thatched huts, minor damage to power and communication lines due to breaking of branches. Major damage to Kutcha and damage to Pucca roads. Uprooting of small trees and some damage to paddy crops, banana, papaya trees and orchards. Sea water inundation in low lying areas after erosion of Kutcha embankments.

(vi) Action suggested

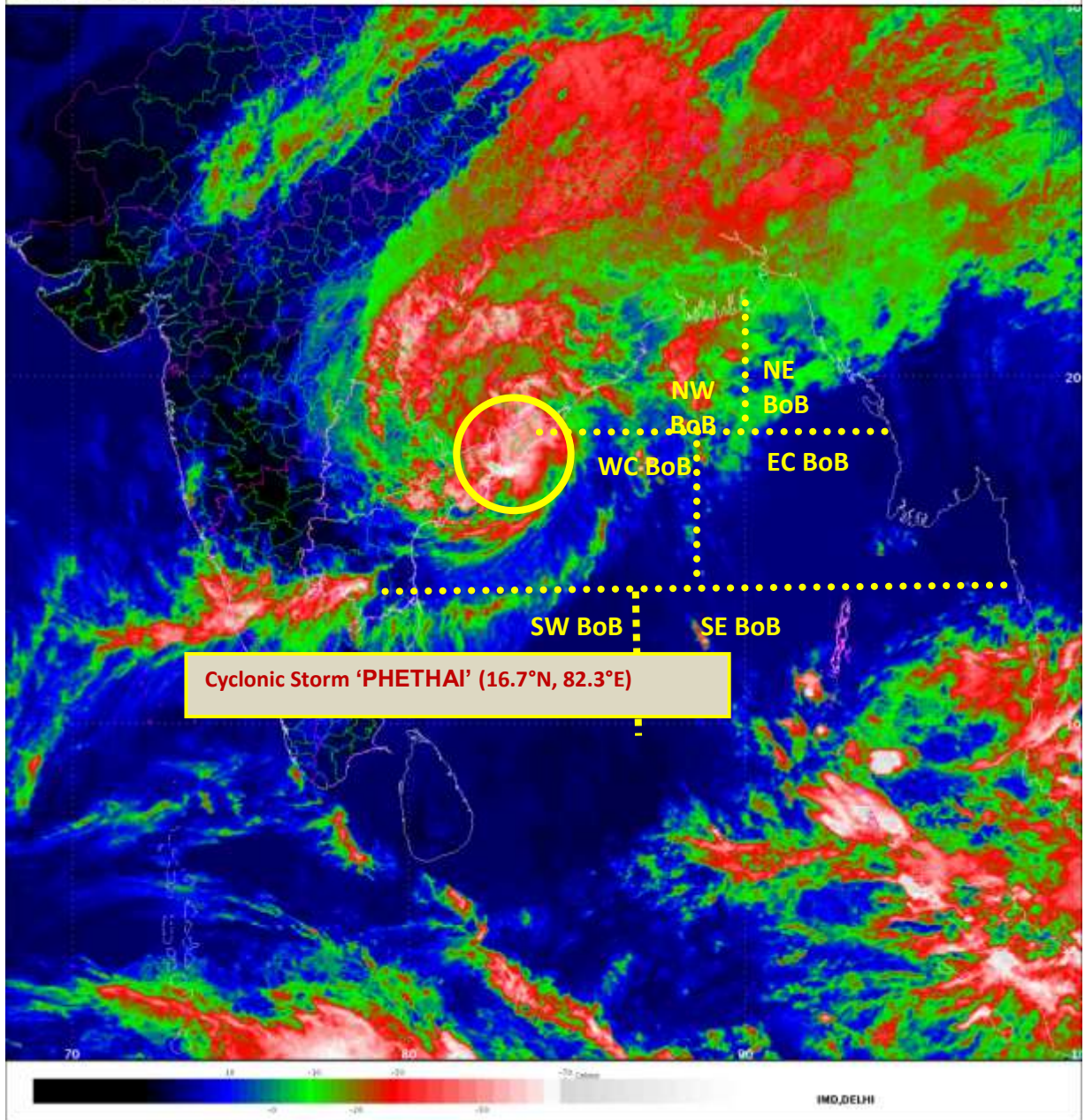
- Total suspension of fishing operations along & off Andhra Pradesh coast on today, the 17th December.
- The fishermen are advised not to venture into westcentral Bay of Bengal and along & off north Andhra Pradesh during next 12 hours.

The system is under continuous surveillance and concerned state governments are being informed regularly.

Kindly visit www.imd.gov.in and www.rsmcnewdelhi.imd.gov.in for updates on the system.

SAT INSAT-3D
IMG_TIR1_TEMP 10.8 um
SECTOR BAYOFBENGAL Mercator (NHC LISI)

17-12-2018/09:30 GMT
17-12-2018/15:00 IST

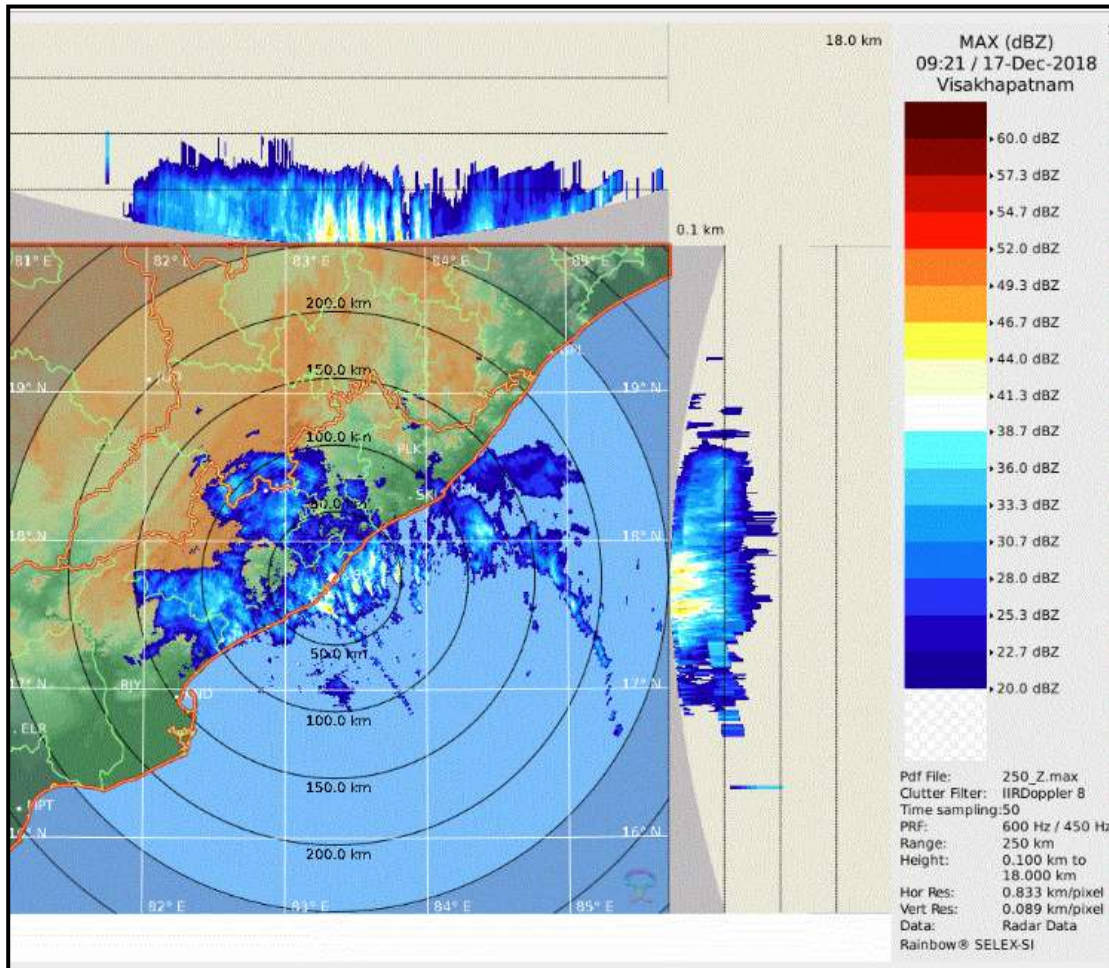


Contact: Cyclone Warning Division, Office of the Director General of Meteorology,
India Meteorological Department, Ministry of Earth Sciences.

Phone: (91) 11-24652484, FAX: (91) 11-24643128, 24623220, E-mail: cwdhq2008@gmail.com, Website:
rsmcnewdelhi.imd.gov.in

Spatial rainfall distribution: Isolated: <25%, A few: 26-50%, Many: 51-75%, Most: 76-100%

Rainfall amount (mm): Heavy rain: 64.5 – 115.5, Very heavy rain: 115.6 – 204.4, Extremely heavy rain: 204.5 or more.

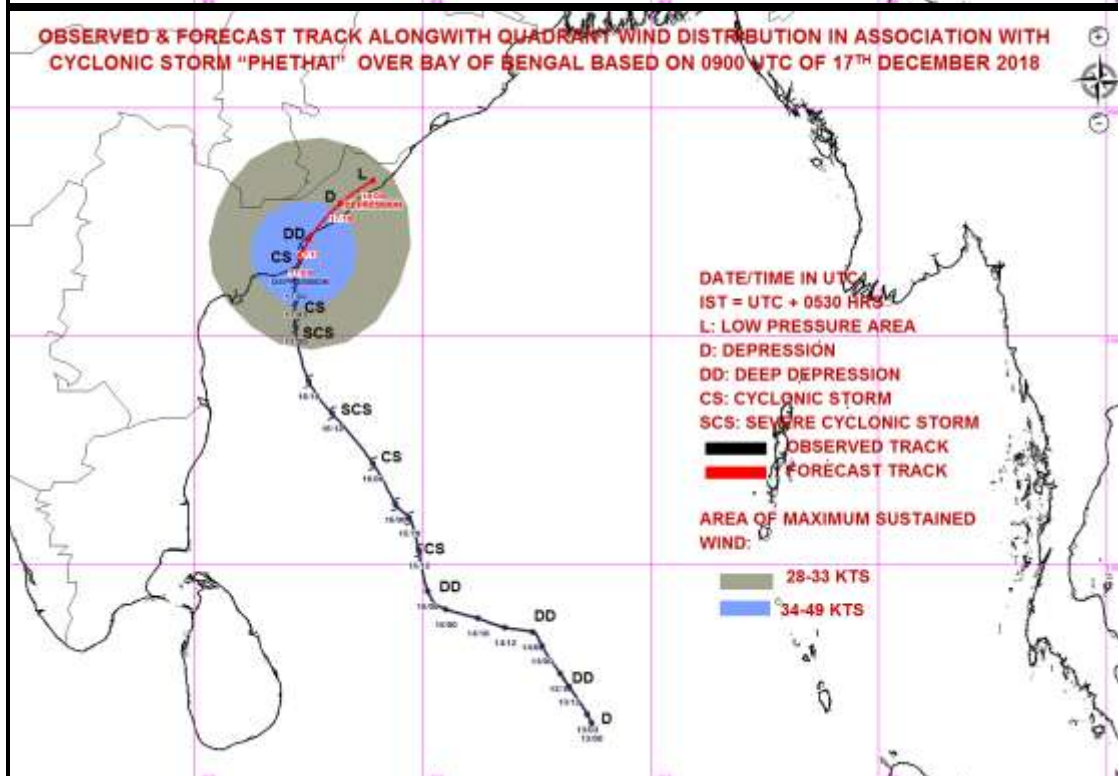
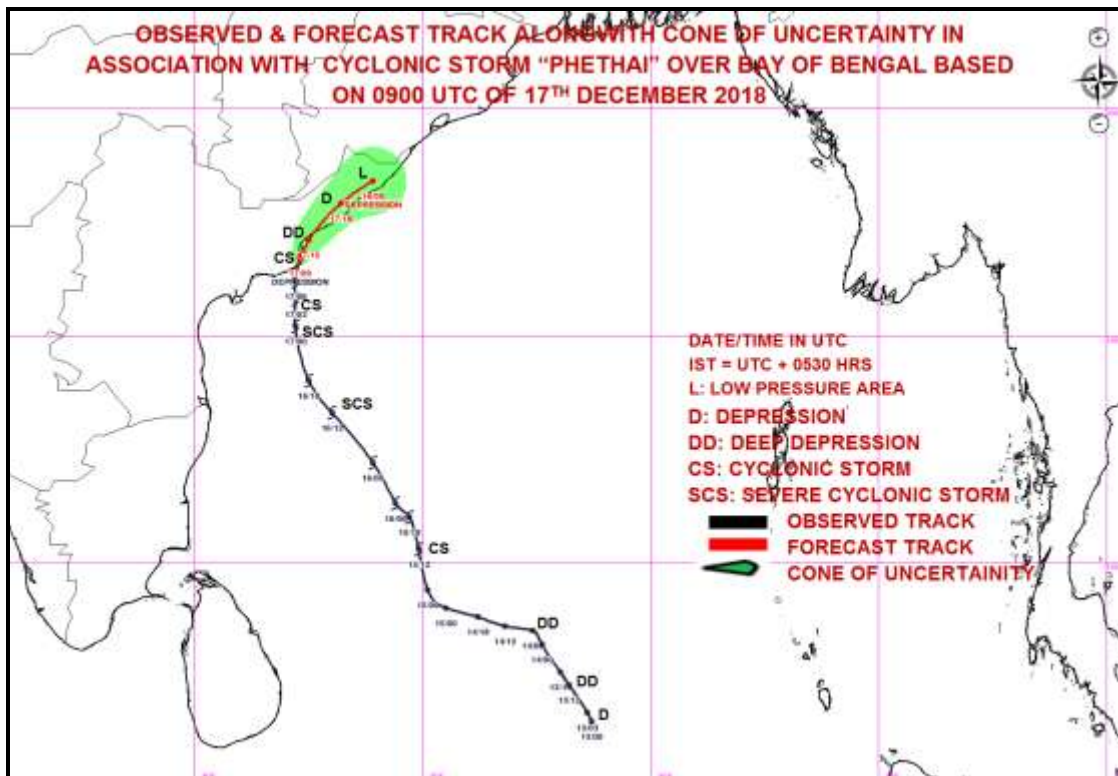


Contact: Cyclone Warning Division, Office of the Director General of Meteorology,
India Meteorological Department, Ministry of Earth Sciences.

Phone: (91) 11-24652484, FAX: (91) 11-24643128, 24623220, E-mail: cwdhq2008@gmail.com, Website:
rsmcnewdelhi.imd.gov.in

Spatial rainfall distribution: Isolated: <25%, A few: 26-50%, Many: 51-75%, Most: 76-100%

Rainfall amount (mm): Heavy rain: 64.5 – 115.5, Very heavy rain: 115.6 – 204.4, Extremely heavy rain: 204.5 or more.



Contact: Cyclone Warning Division, Office of the Director General of Meteorology,
 India Meteorological Department, Ministry of Earth Sciences.

Phone: (91) 11-24652484, FAX: (91) 11-24643128, 24623220, E-mail: cwdhq2008@gmail.com, Website:
rsmcnewdelhi.imd.gov.in

Spatial rainfall distribution: Isolated: <25%, A few: 26-50%, Many: 51-75%, Most: 76-100%

Rainfall amount (mm): Heavy rain: 64.5 – 115.5, Very heavy rain: 115.6 – 204.4, Extremely heavy rain: 204.5 or more.