



Government of India
Ministry of Earth Sciences
Earth System Science Organisation



Earth System Science Organisation
India Meteorological Department

PRESS RELEASE

Time of issue: 1300 hours IST

Dated: 13-11-2018

Sub: Cyclonic storm 'GAJA' westcentral and adjoining eastcentral & south Bay of Bengal (Cyclone Alert for Tamil Nadu & Puducherry coast: Yellow Message)

Yesterday's cyclonic storm (CS) "Gaja" over westcentral and adjoining eastcentral & southeast Bay of Bengal (BoB) followed an anticlockwise looping track during past 24 hours and lay centred at 0830 hrs IST of today, the 13th November, 2018 over westcentral and adjoining eastcentral & south BoB near latitude 13.3°N and longitude 87.1°E, about 740 km east-northeast of Chennai (Tamil Nadu) and 830 km east-northeast of Nagappattinam (Tamil Nadu). It is likely to move west-southwestwards and intensify further into a severe cyclonic storm during next 24 hours. While moving west-southwestwards further, it is likely to weaken gradually on 15th November and cross Tamil Nadu coast between Pamban and Cuddalore as a Cyclonic Storm during 15th November afternoon.

Forecast track and intensity are given in the following table:

Date/Time(IST)	Position (Lat. °N/ long. °E)	Maximum sustained surface wind speed (Kmph)	Category of cyclonic disturbance
13.11.18/0830	13.3/87.1	70-80 gusting to 90	Cyclonic Storm
13.11.18/1130	13.0/86.6	75-85 gusting to 95	Cyclonic Storm
13.11.18/1730	12.6/85.6	80-90 gusting to 100	Cyclonic Storm
13.11.18/2330	12.2/84.7	90-100 gusting to 110	Severe Cyclonic Storm
14.11.18/0530	11.7/83.7	100-110 gusting to 125	Severe Cyclonic Storm
14.11.18/1730	11.1/82.3	100-110 gusting to 125	Severe Cyclonic Storm
15.11.18/0530	10.6/80.7	80-90 gusting to 100	Cyclonic Storm
15.11.18/1730	10.1/78.8	50-60 gusting to 70	Deep Depression
16.11.18/0530	9.8/76.7	35-45 gusting to 55	Depression
16.11.18/1730	9.6/74.2	20-30 gusting to 40	Low

Warnings:

(i) Heavy rainfall warnings:

Region	14 November 2018*	15 November 2018*	16 November 2018*
Tamilnadu	Rainfall at many places with heavy falls at isolated places very likely to commence over north coastal Tamil Nadu & adjoining districts of south coastal Tamil Nadu from 14 th Nov. evening.	Rainfall at most places with heavy to very heavy at a few places over Tamilnadu. Extremely heavy falls (≥ 20 cm) at isolated places is also likely over Cuddalore, Nagappattinam, Tiruvarur, Thanjavur, Pudukkottai, Tuticorin and Ramanathapuram districts.	Rainfall at most places with heavy falls at a few places and very heavy at isolated places very likely over interior Tamil Nadu.

Contact: Cyclone Warning Division, Office of the Director General of Meteorology, India Meteorological Department, Ministry of Earth Sciences.

Phone: (91) 11-24652484, FAX: (91) 11-24643128, 24623220, E-mail:cwdhq2008@gmail.com, Website: rsmcnewdelhi.imd.gov.in

Spatial rainfall distribution: Isolated: <25%, A few: 26-50%, Many: 51-75%, Most: 76-100%

Rainfall amount (mm): Heavy rain: 64.5 – 115.5, Very heavy rain: 115.6 – 204.4, Extremely heavy rain: 204.5 or more.

South Coastal Andhra Pradesh	Rainfall at many places with heavy falls at isolated places very likely to commence from 14 th November evening.	Rainfall at most places with heavy falls at isolated places	Nil
Rayalaseema	Nil	Rainfall at many places with heavy falls at isolated places	Nil
Kerala	NIL	Rainfall at many places with heavy to very heavy falls at isolated places	Rainfall at most places with heavy to very heavy falls at isolated places

Legends: Red-Take Action; Orange- Be prepared; Yellow- be updated; Green: No warning

Heavy rain: 64.5-115.5 mm/day; Very heavy rain: 115.6-204.4 mm/day; Extremely heavy rain: more than 204.4 mm/day

Note 1: * Rainfall till 0830 IST of next day.

Note 2: Red color warning means take action. It does not mean red alert.

(ii) Wind warning

- Gale wind speed reaching 70-80 kmph gusting to 90 kmph prevails over westcentral and adjoining eastcentral & south BoB. It is very likely to increase gradually becoming 90-100 kmph gusting to 110 kmph over southwest & adjoining westcentral and southeast BoB from 14th November 2018.
- Squally wind speed reaching 45-55 kmph gusting to 65 kmph very likely to commence along & off north Tamil Nadu & Puducherry and adjoining south Andhra Pradesh coasts from 14th November morning. It is very likely to increase gradually becoming Gale wind speed 80-90 kmph gusting to 100 kmph along & off Tamil Nadu & Puducherry coasts from 15th November morning onwards.
- Strong wind speed reaching 30-40 kmph gusting to 50 kmph very likely over interior Tamilnadu, south Kerala, southeast Arabian Sea along & off Kerala coast, Comorian area, Gulf of Mannar and Palk Strait on 16th November. Strong wind speed reaching 30-40 kmph gusting to 50 kmph very likely to prevail over southeast Arabian Sea and along & off Kerala coast on 17th November.

(iii) Sea condition

Sea condition is high over westcentral and adjoining eastcentral & south BoB. It will become 'very high' over southwest and adjoining westcentral and southeast BoB on 14th and high over the southwest BoB on 15th. The sea condition is very likely to be rough to very rough along and off Tamil Nadu-south Andhra Pradesh coasts from 14th November morning and high on along & off Tamil Nadu & Puducherry coast on 15th November morning.

(iv) Storm Surge Warning

Storm surge of height of about 1.0 meter above astronomical tide is very likely to inundate low lying areas of **Nagappattinam, Thanjavur, Pudukkottai and Ramanathapuram districts of Tamil Nadu and Karaikal district of Puducherry** at the time of landfall.

(v) Damage Expected over districts of Cuddalore, Nagappattinam, Tiruvarur, Thanjavur, Pudukkottai and Ramanathapuram districts of Tamil Nadu and Karaikal district of Puducherry:

Major damage to thatched huts/houses, roof tops may blow off and unattached metal sheets may fly. Damage to power and communication lines. Major damage to Kutcha & minor damage to Pucca roads. Breaking of tree branches and uprooting of large avenue trees. Damage to paddy crops, banana, papaya trees and orchards. Sea water inundation in low lying areas after erosion of Kutcha embankments.

Contact: Cyclone Warning Division, Office of the Director General of Meteorology, India Meteorological Department, Ministry of Earth Sciences.

Phone: (91) 11-24652484, FAX: (91) 11-24643128, 24623220, E-mail: cwdhq2008@gmail.com, Website: rsmcnewdelhi.imd.gov.in

Spatial rainfall distribution: Isolated: <25%, A few: 26-50%, Many: 51-75%, Most: 76-100%

Rainfall amount (mm): Heavy rain: 64.5 – 115.5, Very heavy rain: 115.6 – 204.4, Extremely heavy rain: 204.5 or more.

(vi) Action Suggested:

- Total suspension of fishing operations along & off Tamil Nadu & Puducherry and adjoining south Andhra Pradesh coasts during 13-15th November.
- The fishermen are advised not to venture into central parts of south and central BoB on 13th and into southwest & adjoining westcentral BoB during 13-15th November.
- The fishermen, who are in deep Sea are advised to return to coasts.
- Coastal hutment dwellers are advised to move to safer places. Other people in the affected areas to remain indoors.

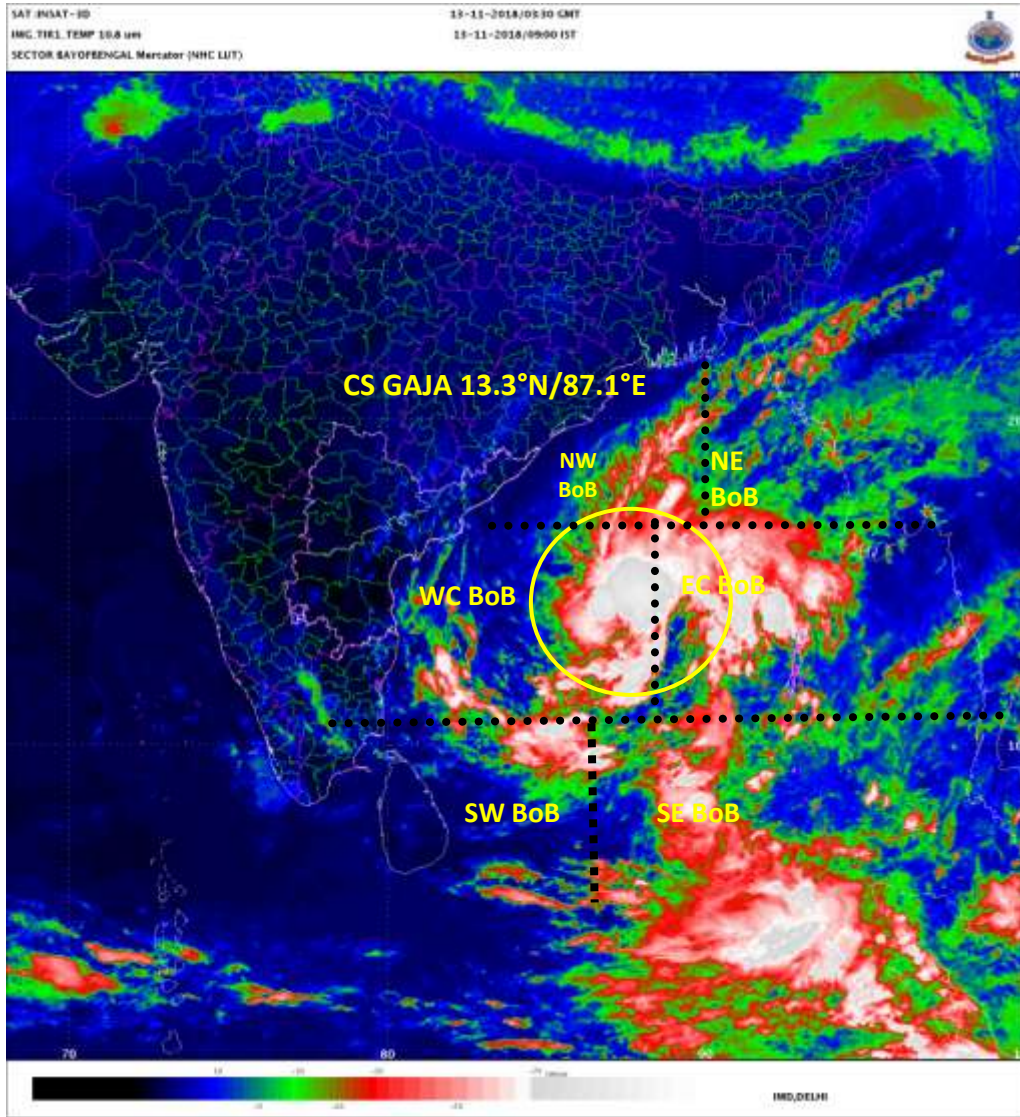
Kindly visit www.imd.gov.in and www.rsmcnewdelhi.imd.gov.in for updates on the system.

Contact: Cyclone Warning Division, Office of the Director General of Meteorology,
India Meteorological Department, Ministry of Earth Sciences.

Phone: (91) 11-24652484, FAX: (91) 11-24643128, 24623220, E-mail: cwdhq2008@gmail.com, Website: rsmcnewdelhi.imd.gov.in

Spatial rainfall distribution: Isolated: <25%, A few: 26-50%, Many: 51-75%, Most: 76-100%

Rainfall amount (mm): Heavy rain: 64.5 – 115.5, Very heavy rain: 115.6 – 204.4, Extremely heavy rain: 204.5 or more.

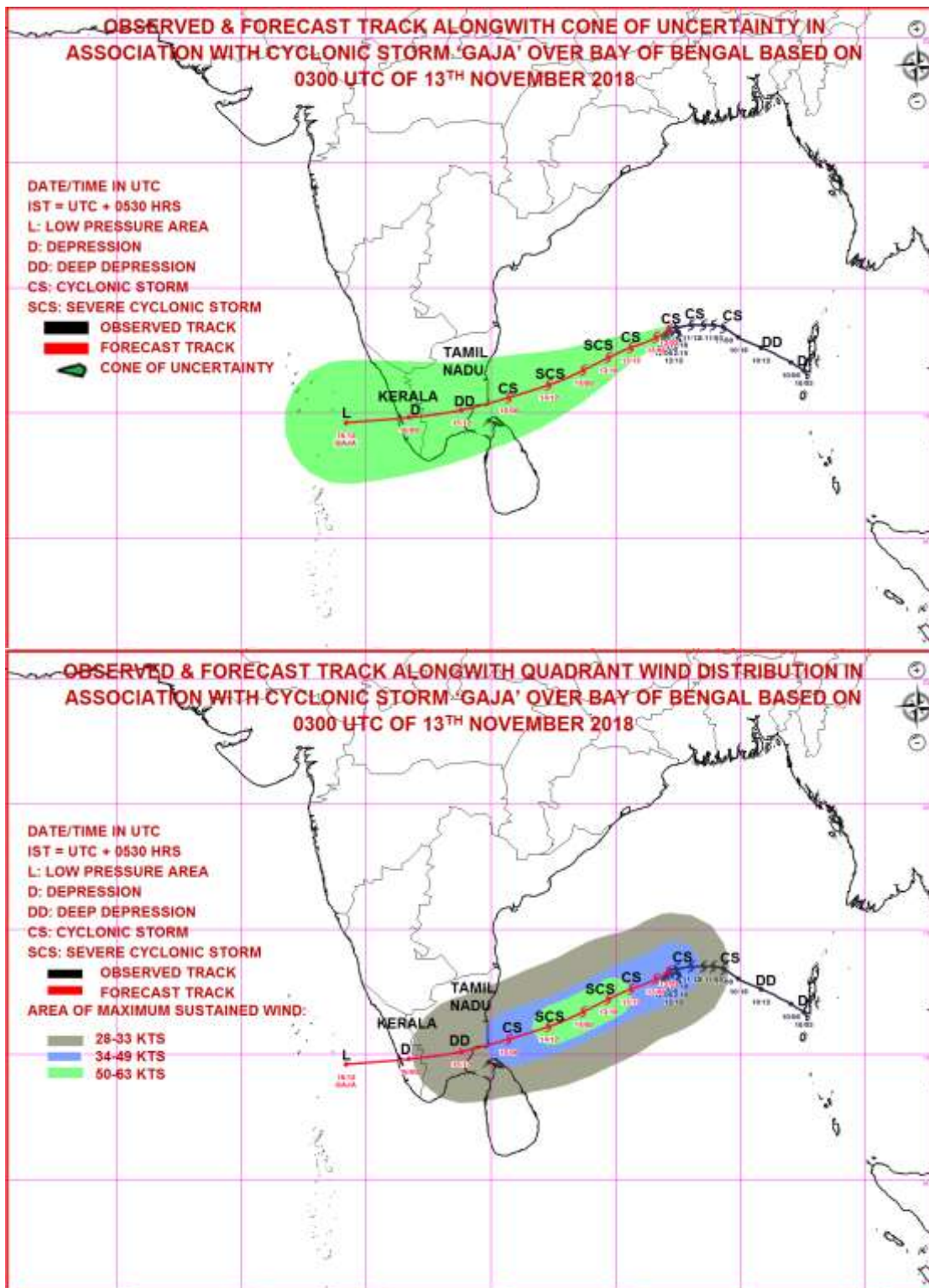


Contact: Cyclone Warning Division, Office of the Director General of Meteorology,
 India Meteorological Department, Ministry of Earth Sciences.

Phone: (91) 11-24652484, FAX: (91) 11-24643128, 24623220, E-mail: cwdhq2008@gmail.com, Website: rsmcnewdelhi.imd.gov.in

Spatial rainfall distribution: Isolated: <25%, A few: 26-50%, Many: 51-75%, Most: 76-100%

Rainfall amount (mm): Heavy rain: 64.5 – 115.5, Very heavy rain: 115.6 – 204.4, Extremely heavy rain: 204.5 or more.



Contact: Cyclone Warning Division, Office of the Director General of Meteorology,
 India Meteorological Department, Ministry of Earth Sciences.

Phone: (91) 11-24652484, FAX: (91) 11-24643128, 24623220, E-mail: cwdhq2008@gmail.com, Website: rsmcnewdelhi.imd.gov.in

Spatial rainfall distribution: Isolated: <25%, A few: 26-50%, Many: 51-75%, Most: 76-100%

Rainfall amount (mm): Heavy rain: 64.5 – 115.5, Very heavy rain: 115.6 – 204.4, Extremely heavy rain: 204.5 or more.