



Government of India  
Ministry of Earth Sciences  
Earth System Science Organisation



Earth System Science Organisation  
India Meteorological Department

Time of issue: 1430 hours IST

Dated: 13-10-2018

**Sub: (a) Low pressure area over Gangetic West Bengal and adjoining Bangladesh and north Bay of Bengal  
(b) Cyclonic Storm, 'LUBAN' over westcentral Arabian Sea**

**(A) Low pressure area over Gangetic West Bengal and adjoining Bangladesh and north Bay of Bengal**

Yesterday's deep depression over Odisha moved east-northeastwards and weakened into a depression over north Odisha in the evening. Continuing to move east-northeastwards, it weakened further into a well marked low pressure area in the early morning and lay as a low pressure area over Gangetic West Bengal and adjoining Bangladesh & north Bay of Bengal in the morning of today, the 13<sup>th</sup> October.

**(i) Heavy rainfall warnings:**

Rainfall at many places with heavy falls at isolated Places very likely over south Assam, east Meghalaya, Mizoram, Tripura and Manipur during next 24 hours.

**(ii) Wind warning:**

Strong wind speed of 30-40 kmph gusting to 50 kmph very likely along & off West Bengal & Bangladesh coast during next 12 hours.

**(iii) Sea condition:**

The Sea conditions will be moderate to rough along & off West Bengal and Bangladesh coast during next 12 hours.

**Realised Heavy Rainfall**

The realised 24 hr cumulative heavy rainfall due to the system as recorded at 0830 IST is given along with the forecast issued at 0830 hours IST of 12<sup>th</sup> October valid for 24 hrs ending at 0830 hours IST of 13<sup>th</sup> October is given below:

Region	Forecast Rainfall for Day-1 (upto 0830 IST of 13th October 2018)	Realised Rainfall for Day-1 (upto 0830 IST of 13 <sup>th</sup> October 2018)
Odisha	Rainfall at most places with heavy to very heavy falls and extremely heavy falls at isolated places over north Odisha.	<b>Assam &amp; Meghalaya:</b> Karimganj & B P Ghat -8 each <b>Manipur, Mizoram &amp; Tripura:</b> Moderate
Gangetic West Bengal	Rainfall at most places with heavy to very heavy falls at isolated places	<b>Gangetic West Bengal:</b> Digha -15, Kalaikunda -10 <b>Odisha:</b> Betanati -16, Kaptipada, Rajghat & Bhogra -13 each, Danagadi, Dhamnagar, Balimundali, Tihidi & Bonth -11 each, Jaleswar & Remuna -10 each, Thakurmunda & Karanjia -9 each, Jajpur, Samakhunta, Bangiriposi, Mahanga, Anandpur, Bari, Balasore, Nh5 Gobindpur & Chandanpur -8 each, Baripada, Nilgiri, Udala, Sukinda, Ghatagaon & Jamsolaghat -7 each
Assam & Meghalaya	Rainfall at most places with heavy to very heavy falls at Isolated Places	
Manipur, Mizoram & Tripura	Rainfall at most places with heavy to very heavy falls at isolated places	

This is last update in association with cyclone Titli. However, regular bulletins shall continue from National Weather Forecasting Centre and concerned Meteorological Centres.

Contact: Cyclone Warning Division, Office of the Director General of Meteorology,  
India Meteorological Department, Ministry of Earth Sciences.

Phone: (91) 11-24652484, FAX: (91) 11-24643128, 24623220, E-mail: [cwdhq2008@gmail.com](mailto:cwdhq2008@gmail.com), Website: [rsmcnewdelhi.imd.gov.in](http://rsmcnewdelhi.imd.gov.in)

Spatial rainfall distribution: Isolated: <25%, A few: 26-50%, Many: 51-75%, Most: 76-100%

Rainfall amount (mm): Heavy rain: 64.5 – 115.5, Very heavy rain: 115.6 – 204.4, Extremely heavy rain: 204.5 or more.

## **(B) Cyclonic Storm, 'LUBAN' over westcentral Arabian Sea:**

Yesterday's severe cyclonic storm over westcentral Arabian Sea moved west-northwestwards and weakened into a cyclonic storm in the midnight. Continuing to move west-northwestwards, it lay centred 0830 hrs IST of today, the 13<sup>th</sup> October 2018 over westcentral Arabian Sea, near latitude 14.8°N and longitude 55.6°E, about 290 km south-southeast of Salalah (Oman), 300 km northeast of Socotra Islands (Yemen), 400 km east-southeast of Al-Ghaidah (Yemen) and 680 km east-northeast of Riyan (Mukalla).

It is very likely to move west-northwestwards and cross Yemen Coast between Riyan (Mukalla) and Al-Ghaidah (Yemen), close to 15°N during noon/afternoon of 14<sup>th</sup> October 2018 as a severe cyclonic storm.

Forecast track & intensity are given in the following table:

<b>Date/Time(IST)</b>	<b>Position (Lat. °N/ long. °E)</b>	<b>Maximum sustained surface wind speed (Kmph)</b>	<b>Category of cyclonic disturbance</b>
13.10.18/0830	14.8/55.6	70-80 gusting to 90	Cyclonic Storm
13.10.18/1130	14.9/55.2	70-80 gusting to 90	Cyclonic Storm
13.10.18/1730	15.0/54.2	75-85 gusting to 95	Cyclonic Storm
13.10.18/2330	15.0/53.2	80-90 gusting to 100	Cyclonic Storm
14.10.18/0530	15.0/52.0	90-100 gusting to 110	Severe Cyclonic Storm
14.10.18/1730	15.0/49.6	80-90 gusting to 100	Cyclonic Storm
15.10.18/0530	15.2/47.2	45-55 gusting to 65	Depression

### **(i) Wind warning**

- Gale wind speed reaching 70-80 kmph gusting to 90 prevails over westcentral Arabian Sea around system centre.
- Gale wind speed reaching 90-100 kmph gusting to 115 is very likely along & off Yemen & adjoining south Oman coasts at the time of landfall.

### **(ii) Sea condition**

The sea condition will be high to very high over westcentral Arabian Sea along & off south Oman and Yemen coast and also over Gulf of Aden till 14<sup>th</sup> October evening and improve rapidly thereafter.

### **(iii) Fishermen Warning**

The fishermen are advised not to venture into westcentral Arabian Sea along & off south Oman and Yemen coasts and also into Gulf of Aden till 14<sup>th</sup> October.

## GRAPHICS

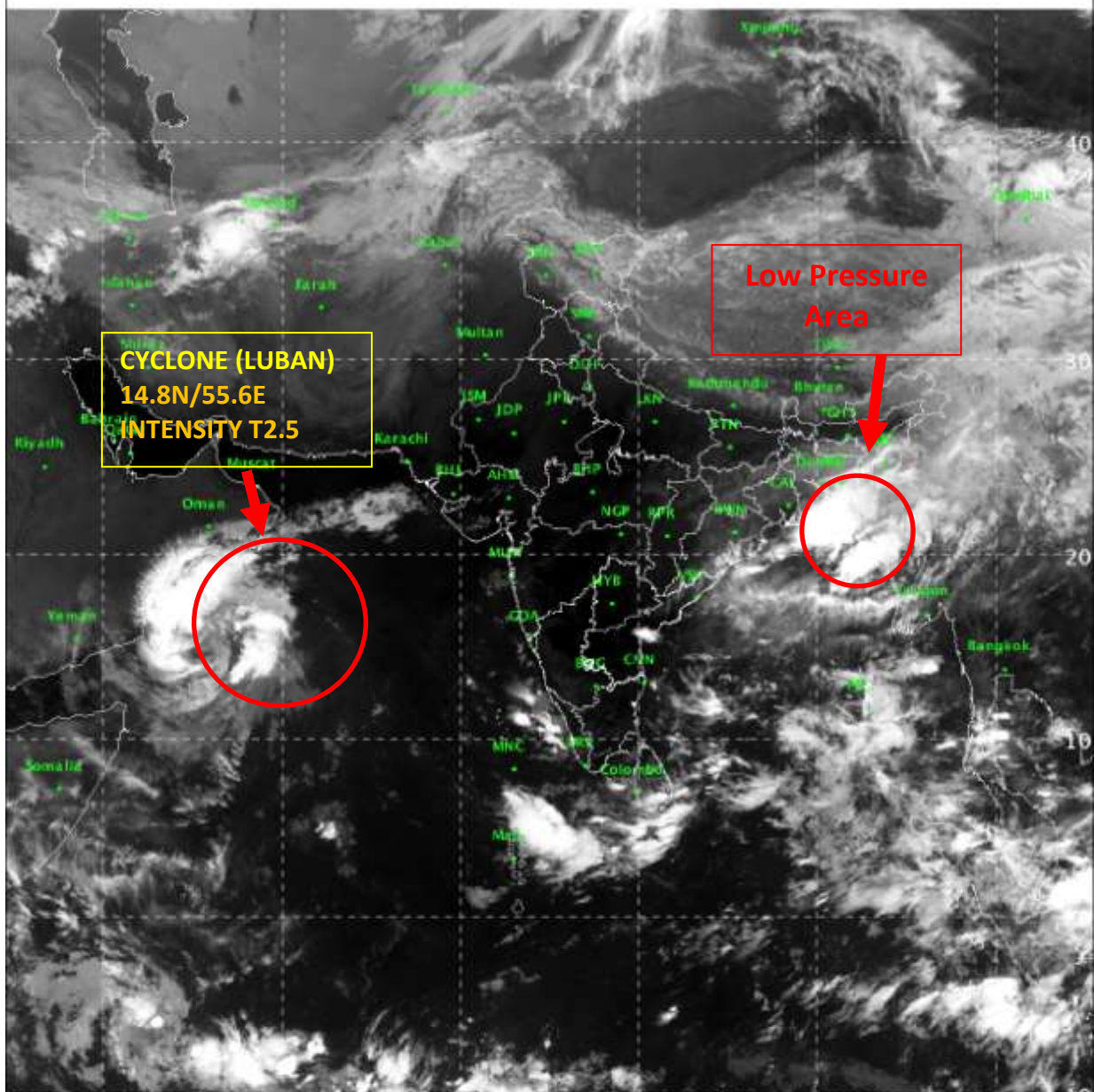
SAT :INSAT-3D IMG

IMG\_TIR1 10.8 um

L1C Mercator (LINEAR STRETCH: 1.0% )

13-10-2018/03:00 GMT

13-10-2018/08:30 IST



516

877

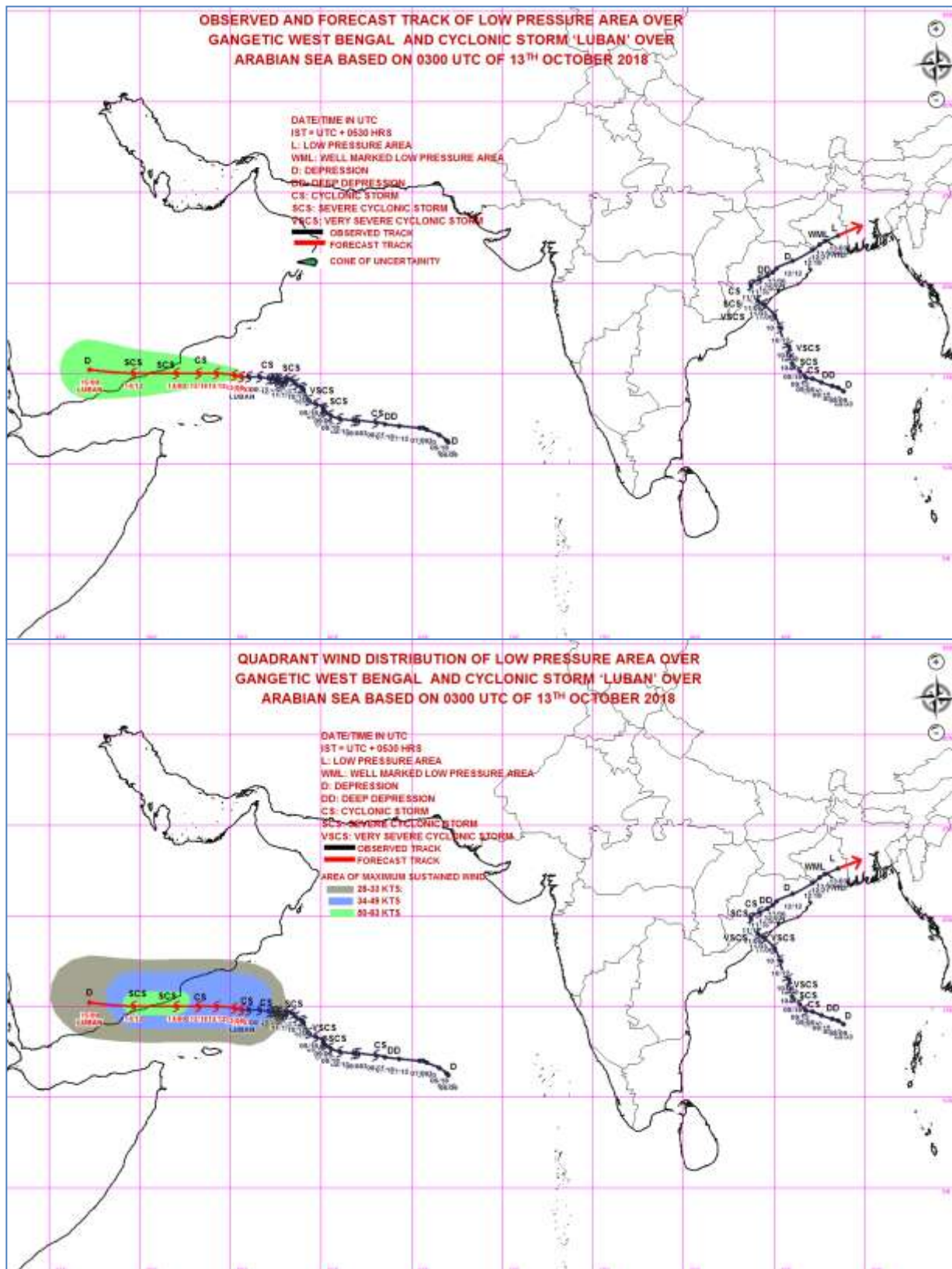
IMD/Delhi

Contact: Cyclone Warning Division, Office of the Director General of Meteorology,  
India Meteorological Department, Ministry of Earth Sciences.

Phone: (91) 11-24652484, FAX: (91) 11-24643128, 24623220, E-mail: [cwdhq2008@gmail.com](mailto:cwdhq2008@gmail.com), Website: [rsmcnewdelhi.imd.gov.in](http://rsmcnewdelhi.imd.gov.in)

Spatial rainfall distribution: Isolated: <25%, A few: 26-50%, Many: 51-75%, Most: 76-100%

Rainfall amount (mm): Heavy rain: 64.5 – 115.5, Very heavy rain: 115.6 – 204.4, Extremely heavy rain: 204.5 or more.



Kindly visit [www.imd.gov.in](http://www.imd.gov.in) and [www.rsmcnewdelhi.imd.gov.in](http://www.rsmcnewdelhi.imd.gov.in) for updates on the system.

Contact: Cyclone Warning Division, Office of the Director General of Meteorology,  
 India Meteorological Department, Ministry of Earth Sciences.

Phone: (91) 11-24652484, FAX: (91) 11-24643128, 24623220, E-mail: [cwdhq2008@gmail.com](mailto:cwdhq2008@gmail.com), Website: [rsmcnewdelhi.imd.gov.in](http://rsmcnewdelhi.imd.gov.in)

Spatial rainfall distribution: Isolated: <25%, A few: 26-50%, Many: 51-75%, Most: 76-100%

Rainfall amount (mm): Heavy rain: 64.5 – 115.5, Very heavy rain: 115.6 – 204.4, Extremely heavy rain: 204.5 or more.