



Government of India
Ministry of Earth Sciences
Earth System Science Organisation



Earth System Science Organisation
India Meteorological Department

PRESS RELEASE-3

Time of issue: 1330 hours IST

Dated: 17-08-2018

Sub: Depression weakened into a Well Marked Low Pressure Area over southwest Madhya Pradesh and adjoining Gujarat & north Madhya Maharashtra.

Yesterday's depression over south Chhattisgarh & adjoining Vidarbha moved west-northwestwards and weakened into a Well Marked Low Pressure Area over southwest Madhya Pradesh and adjoining Gujarat & north Madhya Maharashtra at 0830 hours IST of today, the 17th August.

Warning:

(i) Heavy Rainfall Warning:

- Rainfall at most places with isolated heavy to very heavy rainfall and **extremely heavy falls** very likely over north Konkan, isolated heavy to very heavy rainfall over north Madhya Maharashtra and isolated heavy over south Konkan during next 24 hours. Rainfall at most places with isolated heavy rainfall over Konkan & Goa for subsequent 24 hours.
- Rainfall at most places with heavy to very heavy rainfall at a few places and **extremely heavy falls** at isolated places very likely over Gujarat region and Saurashtra & Kutch during next 24 hours. Rainfall at most places with heavy to very heavy rainfall at isolated places is very likely over these regions for subsequent 24 hours.
- Rainfall at most places with isolated heavy rainfall very likely over southeast Rajasthan and southwest Madhya Pradesh during next 24 hours.

(ii) Verification of 24 hour Heavy Rainfall Warning issued at 0830 hours IST of 16th August and valid upto 0830 hours IST of 17th August is given in Annexure

This is the last Press Release in association with this system. However, regular bulletins shall continue from NWFC Delhi and concerned Regional Meteorological Centres and Meteorological Centres.

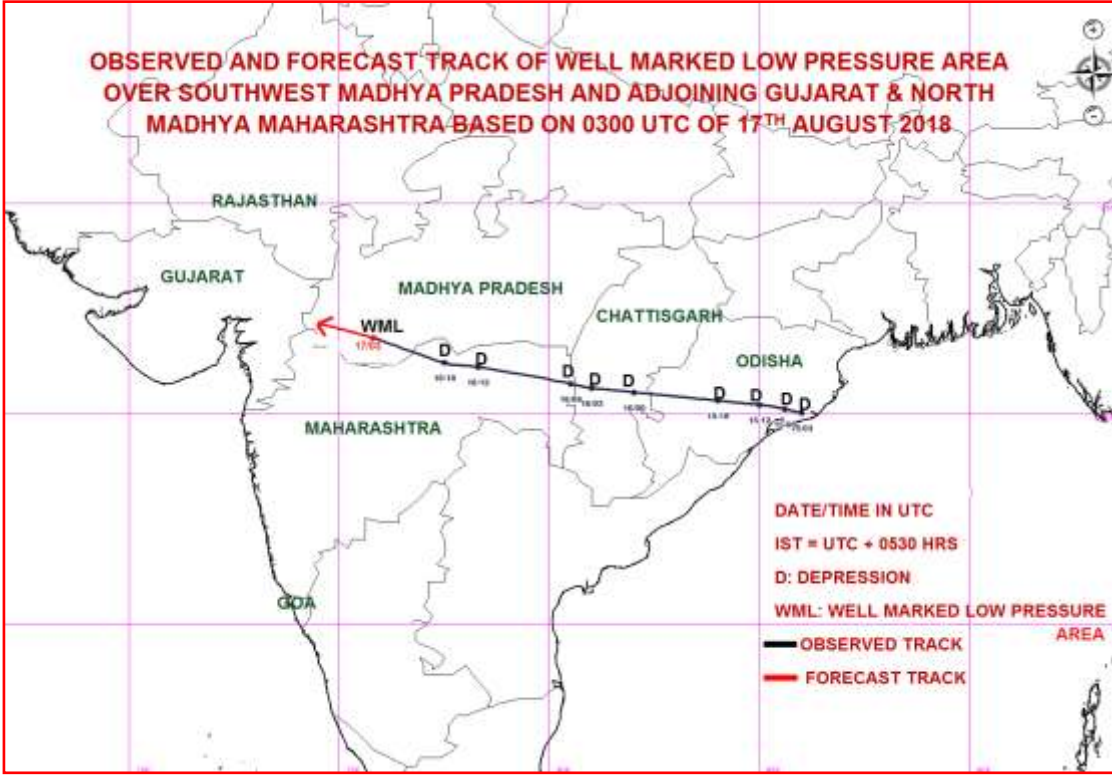
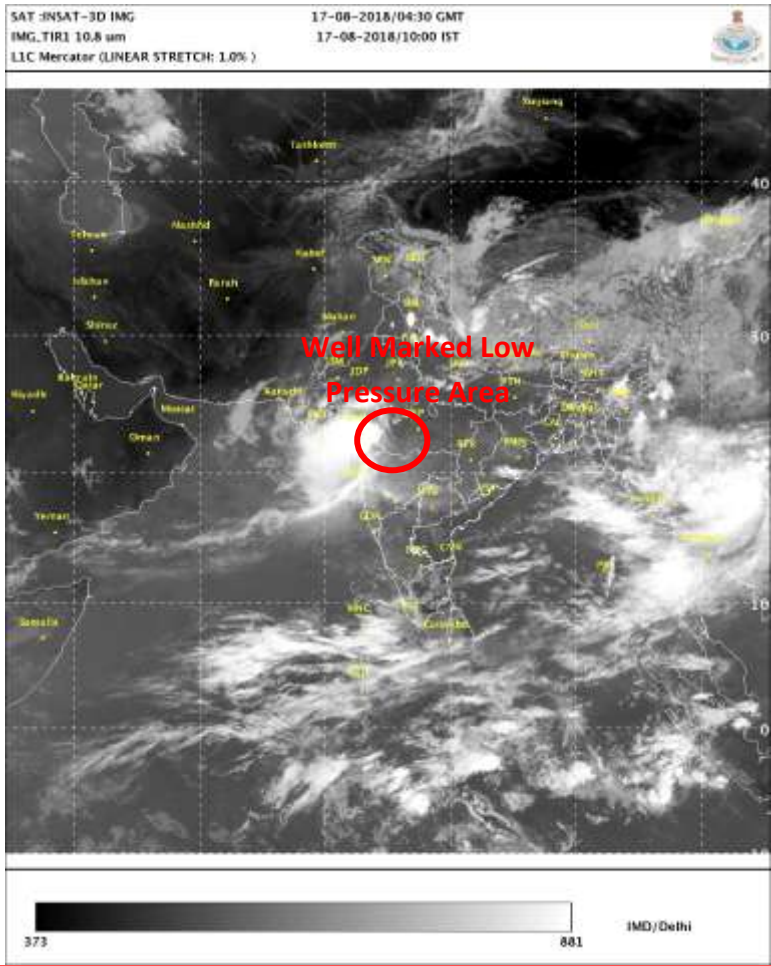
Kindly visit www.imd.gov.in and www.rsmcnewdelhi.imd.gov.in for updates on the system.

Contact: Cyclone Warning Division, Office of the Director General of Meteorology,
India Meteorological Department, Ministry of Earth Sciences.

Phone: (91) 11-24652484, FAX: (91) 11-24643128, 24623220, E-mail: cwdhq2008@gmail.com, Website: rsmcnewdelhi.imd.gov.in

Spatial rainfall distribution: Isolated: <25%, A few: 26-50%, Many: 51-75%, Most: 76-100%

Rainfall amount (mm): Heavy rain: 64.5 – 115.5, Very heavy rain: 115.6 – 204.4, Extremely heavy rain: 204.5 or more.



Contact: Cyclone Warning Division, Office of the Director General of Meteorology,
 India Meteorological Department, Ministry of Earth Sciences.
 Phone: (91) 11-24652484, FAX: (91) 11-24643128, 24623220, E-mail: cwdhq2008@gmail.com, Website: rsmcnewdelhi.imd.gov.in
 Spatial rainfall distribution: Isolated: <25%, A few: 26-50%, Many: 51-75%, Most: 76-100%
 Rainfall amount (mm): Heavy rain: 64.5 – 115.5, Very heavy rain: 115.6 – 204.4, Extremely heavy rain: 204.5 or more.

Verification of 24 hour Heavy Rainfall Warning issued at 0830 hours IST of 16th August and valid upto 0830 hours IST of 17th August

Meteorological Sub-division	Forecast Rainfall for Day-1 (upto 0830 IST of 17 th August 2018)	Realised Rainfall for Day-1 (upto 0830 IST of 17 th August 2018)
Vidarbha	Heavy to very heavy rainfall at a few places with extremely heavy falls at isolated places	Vidarbha: Barshitakli -16, Digras, Karanjlad & Arni-13 each, Manora & Buldana – 12 each, Deolgaon Raja & Pusad – 11 each, Patur, Malkapur & Sindkhed Raja – 10 each, Murtajapur, Darwha, Jalgaon Jamod, Motala, Mangrulpur, Joiti & Umerkhed - 9, Mahagaon, Malegaon, Lonar, Chikhli, Akola & Dharni-8 each, Washim, Mehkar, Korpana & Risod-7 each
Marathwada	-do-	
Madhya Maharashtra	Isolated heavy to very heavy rainfall and extremely heavy falls	Marathwada: Kinwat & Mahur – 19 each, Kannad-17, Aurangabad-16, Phulambri & Jalna-15 each, Pathri, Jafrabad & Selu – 14 each, Mantha, Manvat, Partur & Ghansawangi-13 each, Ardhapur-12, Himayatnagar, Badnapur, Vaijapur & Aundha Nagnath – 11 each, Purna, Jintur, Nanded, Sillod, Hadgaon & Bhokardan - 10 each, Sonpeth, Paithan, Manjlegaon, Kallamnuri & Osmanabad – 9 each, Ambad & Parbhani – 8 each, Kandhar, Vasmat, Soegaon, Gangapur, Kaij, Georai, Mudkhed & Hingoli – 7 each
North Konkan	-do-	
Gujarat	Isolated heavy to very heavy rainfall	Madhya Maharashtra: Mahabaleshwar - 16, Raver, Navapur & Jamner-14 each, Jalgaon - -13, Lonavala - 12, Dhadgaon/Akrani -10, Peth, Dhule, Parola & Erandol -10 each, Shirpur, Bodwad, Pachora, Surgana & Chalisgaon – 9 each, Gidhade, Yaval, Dahigaon-7, Shrirampur, Girnam & Igatpuri – 7 each
North Interior Karnataka	Isolated heavy to very heavy rainfall	Konkan & Goa: Valpoi-14, Bhira & Matheran – 9 each and Dodamarg-8
Telangana	Isolated heavy rainfall	Gujarat Region: Chhota Udepur-14, Tilakwada-13, Ukai, Quant & Valod-12, Godhra & Wanakbori -10 each, V.Vidyanagar-9, Vyara, Subir & Vadodara-8 each, Nizer, Vansda, Garudeshwar, Dhanpur, Garbada, Bodeli, Sagbara & Uchchhal -7 each
Southwest Madhya Pradesh	-do-	Karnataka: Castle Rock - 22; Bhagamandala - 21, Virajpet - 16; Agumbe - 13; Subrahmanya & Ponnampet - 12 each, Napoklu (Kodagu dt) - 11; Mudubidre & Sulya - 10 each; Mangaluru, Kollur, Linganamakki, Kottigehara, Kammaradi - 9 each; Mani, Belthangadi, Dharmasthala, Manchikeri, Londa & Sringeri 8 each; Bantwal, Puttur & Sargur - 7 each.
		Telangana: Boath - 19, Adilabad-10 and Sarangapur-7
		West Madhya Pradesh: Bhikangaon - 23, Shegaon - 21, Khandwa & Burhanpur - 17 each, Khargone, Thikri & Sendhwa - 13 each, Badwani – 12, Jhabua – 11, Manawar, Pandhana, Neapanagar, Sardarpur & Kasarwad – 10 each, Maheshwar & Gandhwani – 9 each, Kukshi, Khaknar & Barwaha – 8 each

Contact: Cyclone Warning Division, Office of the Director General of Meteorology,

India Meteorological Department, Ministry of Earth Sciences.

Phone: (91) 11-24652484, FAX: (91) 11-24643128, 24623220, E-mail: cwdhq2008@gmail.com, Website: rsmcnewdelhi.imd.gov.in

Spatial rainfall distribution: Isolated: <25%, A few: 26-50%, Many: 51-75%, Most: 76-100%

Rainfall amount (mm): Heavy rain: 64.5 – 115.5, Very heavy rain: 115.6 – 204.4, Extremely heavy rain: 204.5 or more.