



Government of India  
Ministry of Earth Sciences  
Earth System Science Organisation



Earth System Science Organisation  
India Meteorological Department

## PRESS RELEASE-2

Time of issue: 1230 hours IST

Dated: 16-08-2018

### Sub: Depression over south Chhattisgarh and adjoining Vidarbha

Yesterday's depression over coastal Odisha moved west-northwestwards and lay centered at 0830 hours IST of today, the 16<sup>th</sup> August over south Chhattisgarh & adjoining Vidarbha near latitude 20.5<sup>o</sup>N and longitude 81.0<sup>o</sup>E, about 120 km east-southeast of Bramhapuri (Vidarbha).

**It is very likely to move west-northwestwards and weaken gradually into a well marked low pressure area during next 24 hours.**

#### **Warning:**

##### **(i) Heavy Rainfall Warning:**

- Rainfall at most places with heavy to very heavy rainfall at a few places with **extremely heavy falls** at isolated places is very likely over Vidarbha & Marathwada during next 24 hours and heavy rainfall at isolated places over West Vidarbha & Marathwada during subsequent 24 hours.
- Rainfall at most places with isolated heavy to very heavy rainfall and **extremely heavy falls** very likely over Madhya Maharashtra and north Konkan during next 48 hours.
- Gujarat region is very likely to receive rainfall at most places with isolated heavy to very heavy rainfall during next 24 hours and isolated heavy to very heavy rain with **extremely heavy falls** for subsequent 24 hours. Saurashtra and Kutch is also very likely to receive heavy to very heavy rainfall at isolated places on 17<sup>th</sup> and 18<sup>th</sup>.
- Rainfall at most places with isolated heavy to very heavy rainfall over North Interior Karnataka and isolated heavy rainfall over Telangana during next 24 hours. Rainfall at most places with isolated heavy rainfall over southwest Madhya Pradesh during next 48 hours.

##### **(ii) Wind Warning:**

- Squally wind speed reaching 35-45 kmph gusting to 55 kmph is very likely over south Chhattisgarh & Vidharbha during next 24 hrs.

##### **(iii) Verification of 24 hour Heavy Rainfall Warning issued at 0830 hours IST of 15<sup>th</sup> August and valid upto 0830 hours IST of 16<sup>th</sup> August is given in Annexure**

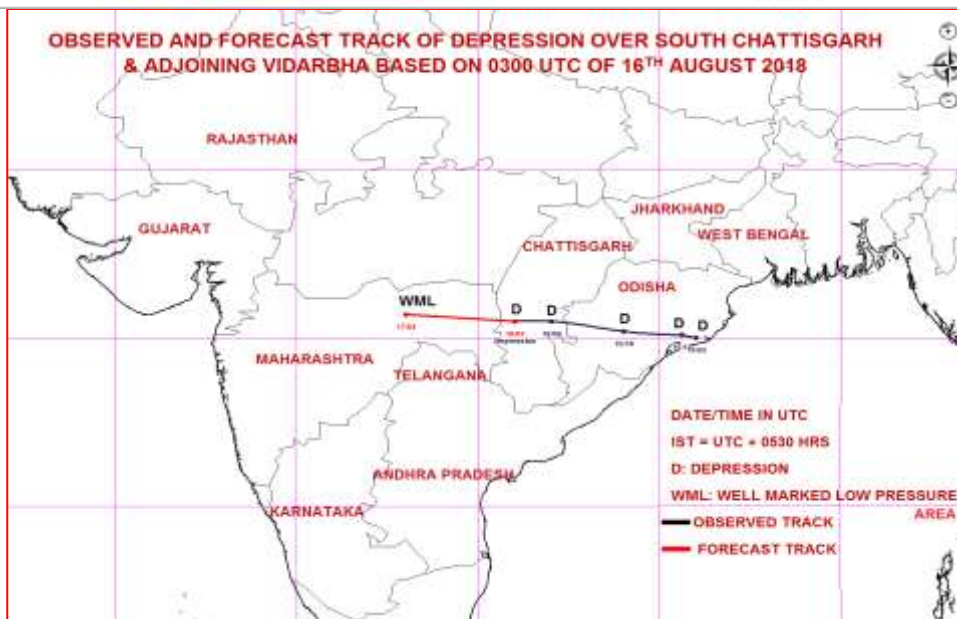
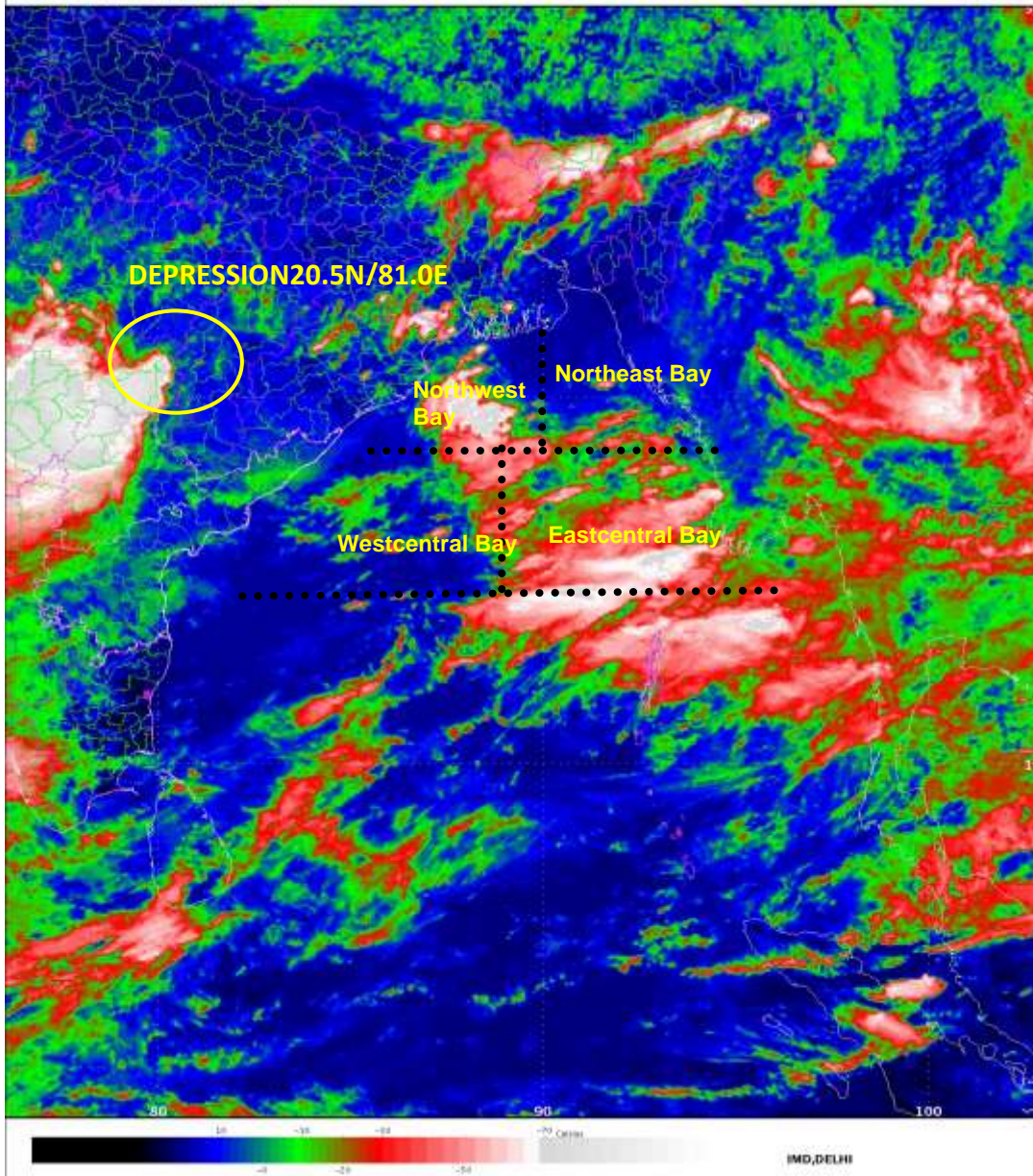
Kindly visit [www.imd.gov.in](http://www.imd.gov.in) and [www.rsmcnewdelhi.imd.gov.in](http://www.rsmcnewdelhi.imd.gov.in) for updates on the system.

Contact: Cyclone Warning Division, Office of the Director General of Meteorology,  
India Meteorological Department, Ministry of Earth Sciences.

Phone: (91) 11-24652484, FAX: (91) 11-24643128, 24623220, E-mail: [cwdhq2008@gmail.com](mailto:cwdhq2008@gmail.com), Website: [rsmcnewdelhi.imd.gov.in](http://rsmcnewdelhi.imd.gov.in)

Spatial rainfall distribution: Isolated: <25%, A few: 26-50%, Many: 51-75%, Most: 76-100%

Rainfall amount (mm): Heavy rain: 64.5 – 115.5, Very heavy rain: 115.6 – 204.4, Extremely heavy rain: 204.5 or more.



Contact: Cyclone Warning Division, Office of the Director General of Meteorology,  
India Meteorological Department, Ministry of Earth Sciences.

Phone: (91) 11-24652484, FAX: (91) 11-24643128, 24623220, E-mail: [cwdhq2008@gmail.com](mailto:cwdhq2008@gmail.com), Website: [rsmcnewdelhi.imd.gov.in](http://rsmcnewdelhi.imd.gov.in)

Spatial rainfall distribution: Isolated: <25%, A few: 26-50%, Many: 51-75%, Most: 76-100%

Rainfall amount (mm): Heavy rain: 64.5 – 115.5, Very heavy rain: 115.6 – 204.4, Extremely heavy rain: 204.5 or more.

## Annexure

**Verification of 24 hour Heavy Rainfall Warning issued at 0830 hours IST of 15<sup>th</sup> August and valid upto 0830 hours IST of 16<sup>th</sup> August**

Meteorological Sub-division	Forecast Rainfall for Day-1 (upto 0830 IST of 16 <sup>th</sup> August 2018)	Realised Rainfall for Day-1 (upto 0830 IST of 16 <sup>th</sup> August 2018)
<b>South Odisha</b>	Heavy to very heavy rain at a few places and extremely heavy falls at isolated places	<b>Odisha:</b> Malkangiri & Sinapali – 15 each, Junagarh, Boden, & Patnagarh – 12 each, Nawapara -11, Narla, Raighar & Dharmagarh – 10 each, Bhawanipatna, Saintala & Jharbandh – 9 each, Ambadola, Dabugan, Hindol, Nischintakoili, & Similiguda, Lanjigarh & Jeypore – 8 each and Khaprakhol, Kesinga, Paikmal & Chandahandi- 7 each
<b>South Chattisgarh</b>	-do-	<b>West Madhya Pradesh:</b> Gwalior, & Sonkatch & Isagarh – 8 each and Kolaras - 7  <b>East Madhya Pradesh:</b> Dindori- 8 and Tendukheda - 7  <b>Vidarbha:</b> Lakhandur – 13, Bhadravati & Ahiri – 12 each, Korpana 11, Mohadi & Sadakarjuni -10 each, Bramhapuri, Chandrapur & Bhandara – 9 each, Ballarpur, Lakhani, Gondia, Nagbhir & Mulchera - 8 each and Chimur, Deori, Umrer, Mul, Tumsar, Arjuni, Morgaon, Warora, Sindewahi & Desaiganj 7  <b>Chhattisgarh:</b> Bhopalpatnam – 40, Bijapur 14, Kanker 11, Gariabund & Jagdalpur 9, Rajim, Mahasamund, Mana-Raipur & Simga 8 each, Arang & Deobhog – 7 each  <b>Telangana:</b> Perur - 19, Sirpur – 17, Asifabad – 13, Kaleswaram, Utnur & Chennur – 11 each, Manthani, Ibrahimpatnam & Adilabad – 9 each, Ramgundam, Venkatapuram, Metpalle, Bhupalpalle & Mudhole – 8 each and Sarangapur, Eturnagaram, Bhiknur, Boath & Julapalle – 7 each  <b>Madhya Maharashtra:</b> Mahabaleshwar- 14  <b>Marathwada:</b> Mahur, Tuljapur, Bhum & Kinwat – 7 each
<b>North Telengana,</b>	-do-	
<b>Coastal Andhra Pradesh</b>	Heavy to very heavy rainfall at isolated places	
<b>Vidarbha</b>	-do-	
<b>East Madhya Pradesh</b>	-do-	

Contact: Cyclone Warning Division, Office of the Director General of Meteorology, India Meteorological Department, Ministry of Earth Sciences.

Phone: (91) 11-24652484, FAX: (91) 11-24643128, 24623220, E-mail: cwdhq2008@gmail.com, Website: [rsmcnewdelhi.imd.gov.in](http://rsmcnewdelhi.imd.gov.in)

Spatial rainfall distribution: Isolated: <25%, A few: 26-50%, Many: 51-75%, Most: 76-100%

Rainfall amount (mm): Heavy rain: 64.5 – 115.5, Very heavy rain: 115.6 – 204.4, Extremely heavy rain: 204.5 or more.