



सत्यमेव जयते  
**Government of India**  
**Ministry of Earth Sciences**  
**Earth System Science Organisation**



**Earth System Science Organisation**  
**India Meteorological Department**

## PRESS RELEASE-7

Time of issue: 1000 hours IST

Dated: 26-05-2018

**Sub: Extremely Severe Cyclonic Storm “Mekunu” crossed south Oman coast during 0000-0100 hours IST of today, the 26<sup>th</sup> May and weakened into Very Severe Cyclonic Storm over Oman at 0230 hours IST of 26<sup>th</sup> May**

The Extremely Severe Cyclonic Storm “Mekunu” moved north-northwestwards and crossed south Oman coast near latitude 16.85<sup>0</sup>N and longitude 53.75<sup>0</sup>E, about 40 kmph west-southwest of Salalah during 0000 to 0100 hours IST of today, 26<sup>th</sup> May, 2018 as an extremely severe cyclonic storm with an estimated wind speed of 170-180 kmph gusting to 200 kmph. It further moved northwestwards and weakened into a Very Severe Cyclonic Storm over Oman at 0230 hours IST of 26<sup>th</sup> May. Moving further northwestwards, it lay centered at 0530 hours IST of today, 26<sup>th</sup> May, 2018 over Oman near latitude 17.2<sup>0</sup>N and longitude 53.3<sup>0</sup> E, about 85 km west-northwest of Salalah.

**It is very likely to move northwestwards and weaken into a severe cyclonic storm during next 03 hours and into a deep depression during subsequent 06 hours.**

The forecast track positions and intensity are given in table below:

Date/Time(IST)	Position (Lat. <sup>0</sup> N/ long. <sup>0</sup> E)	Maximum sustained surface wind speed (kmph)	Category of cyclonic disturbance
26/0530	17.2/53.3	130-140 gusting to 155	<b>Very Severe Cyclonic Storm</b>
26/1130	17.6/52.8	90-100 gusting to 110	<b>Severe Cyclonic Storm</b>
26/1730	18.1/52.2	55-65 gusting to 75	<b>Deep Depression</b>
27/2330	18.6/51.6	40-50 gusting to 60	<b>Depression</b>

### **Warning:**

**As the system is expected to move away from Indian coast, no adverse weather is expected along & off west coast of India and Lakshadweep.**

#### **(i) Wind warning:**

Gale winds speed reaching 90-100 kmph gusting to 110 kmph is very likely to prevail over westcentral Arabian Sea off south Oman-southeast Yemen coasts during next 03 hours and will decrease thereafter becoming squally wind speed reaching upto 40-50 kmph gusting to 60 kmph by evening of today, the 26<sup>th</sup> May, 2018.

#### **(ii) Sea condition:**

Sea condition will be very high to high over westcentral Arabian Sea along & off south Oman-southeast Yemen coasts during next three hours and will improve gradually thereafter becoming rough by evening of today, the 26<sup>th</sup> May, 2018.

#### **(iii) Fishermen Warning**

Fishermen are advised not to venture into Westcentral Arabian Sea along & off south Oman-southeast Yemen coasts during next 12 hours.

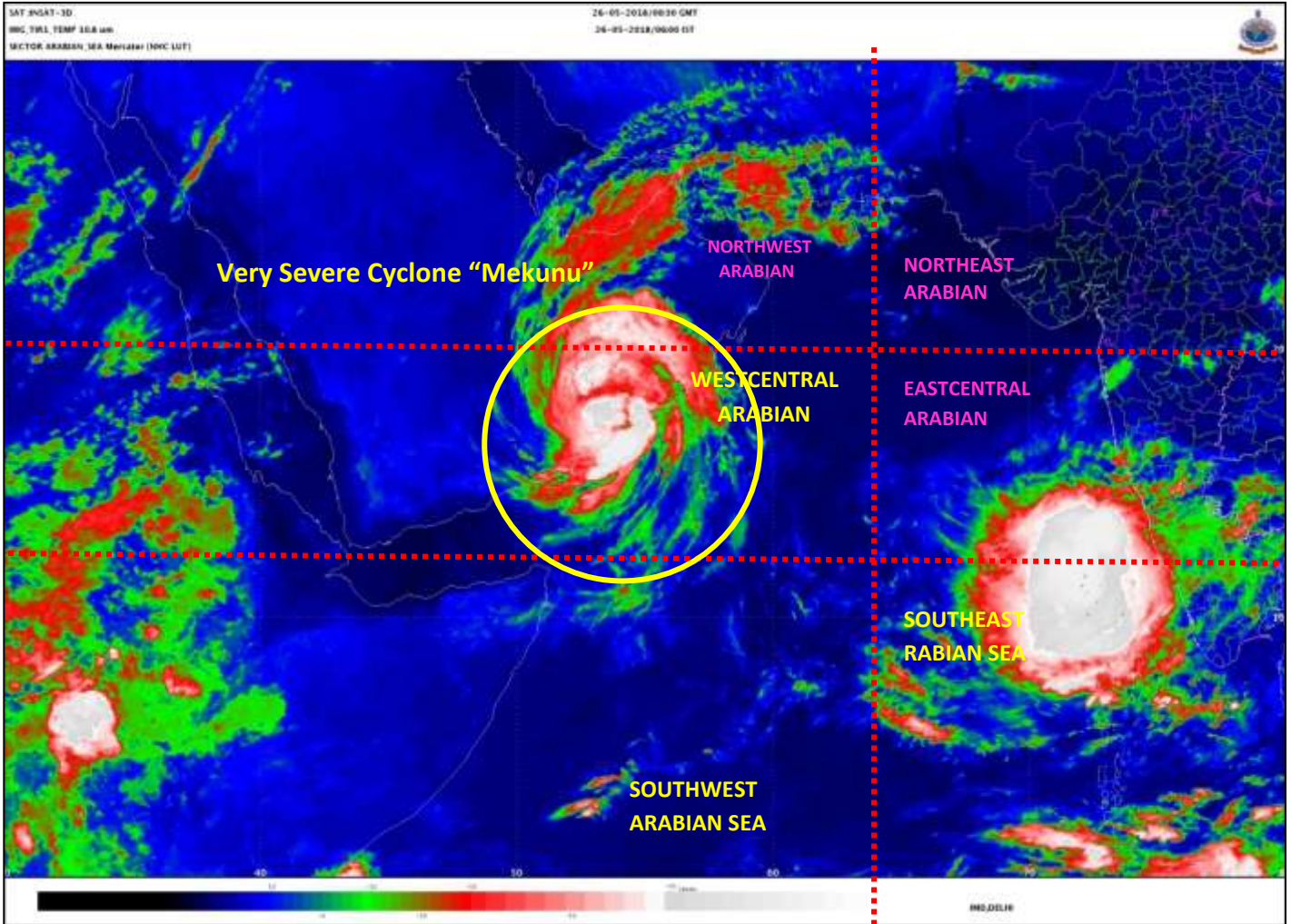
Kindly visit [www.rsmcnewdelhi.imd.gov.in](http://www.rsmcnewdelhi.imd.gov.in) for updates on the system.

Contact: Cyclone Warning Division, Office of the Director General of Meteorology,  
 India Meteorological Department, Ministry of Earth Sciences.

Phone: (91) 11-24652484, FAX: (91) 11-24643128, 24623220, E-mail: cwdhq2008@gmail.com, Website: [rsmcnewdelhi.imd.gov.in](http://rsmcnewdelhi.imd.gov.in)

Spatial rainfall distribution: Isolated: <25%, A few: 26-50%, Many: 51-75%, Most: 76-100%

Rainfall amount (mm): Heavy rain: 64.5 – 115.5, Very heavy rain: 115.6 – 204.4, Extremely heavy rain: 204.5 or more.



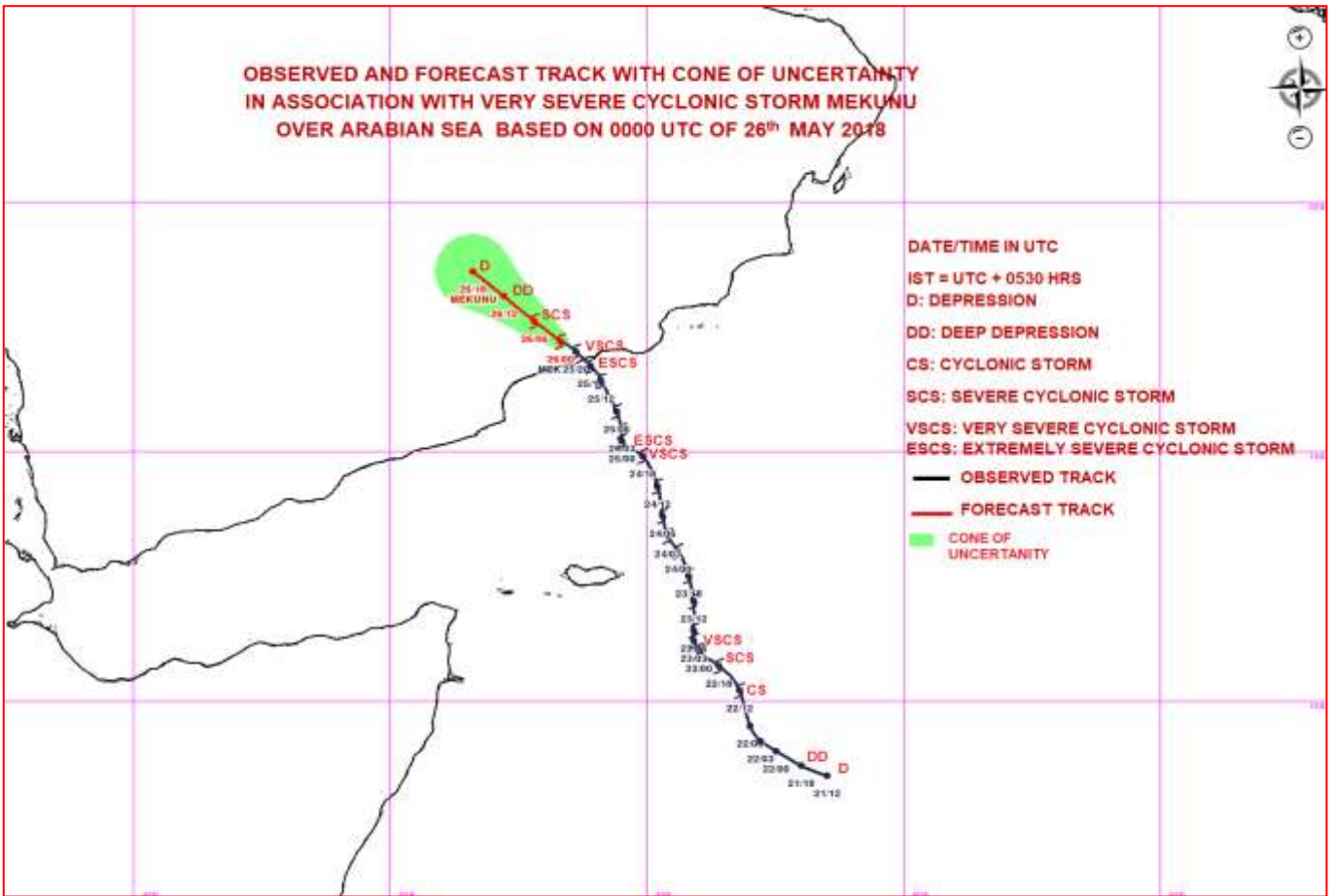
Contact: Cyclone Warning Division, Office of the Director General of Meteorology,  
 India Meteorological Department, Ministry of Earth Sciences.

Phone: (91) 11-24652484, FAX: (91) 11-24643128, 24623220, E-mail: [cwdhq2008@gmail.com](mailto:cwdhq2008@gmail.com), Website: [rsmcnewdelhi.imd.gov.in](http://rsmcnewdelhi.imd.gov.in)

Spatial rainfall distribution: Isolated: <25%, A few: 26-50%, Many: 51-75%, Most: 76-100%

Rainfall amount (mm): Heavy rain: 64.5 – 115.5, Very heavy rain: 115.6 – 204.4, Extremely heavy rain: 204.5 or more.

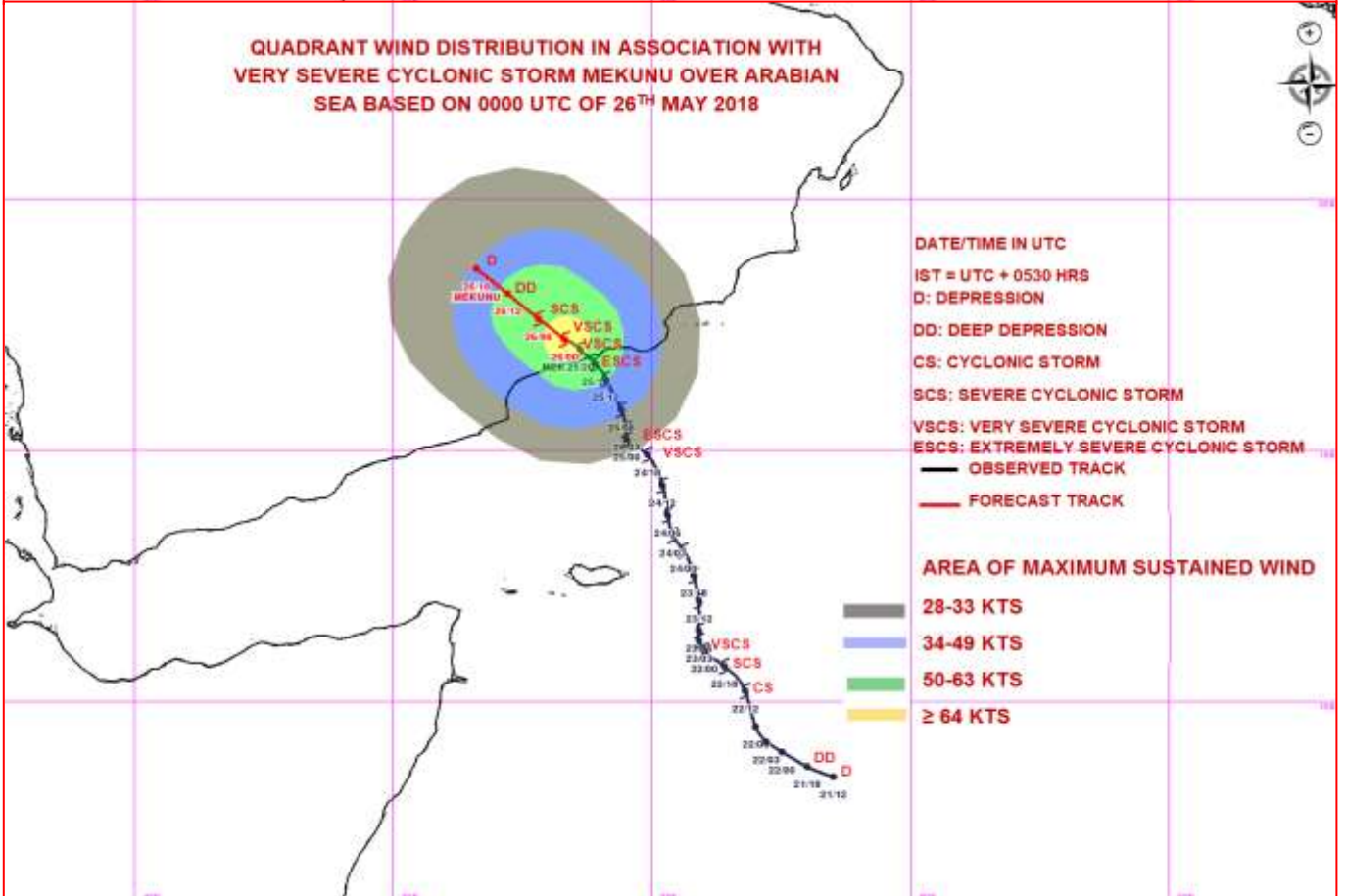
**OBSERVED AND FORECAST TRACK WITH CONE OF UNCERTAINTY  
IN ASSOCIATION WITH VERY SEVERE CYCLONIC STORM MEKUNU  
OVER ARABIAN SEA BASED ON 0000 UTC OF 26<sup>TH</sup> MAY 2018**



DATE/TIME IN UTC  
IST = UTC + 0530 HRS  
D: DEPRESSION  
DD: DEEP DEPRESSION  
CS: CYCLONIC STORM  
SCS: SEVERE CYCLONIC STORM  
VSCS: VERY SEVERE CYCLONIC STORM  
ECS: EXTREMELY SEVERE CYCLONIC STORM

— OBSERVED TRACK  
— FORECAST TRACK  
CONE OF UNCERTAINTY

**QUADRANT WIND DISTRIBUTION IN ASSOCIATION WITH  
VERY SEVERE CYCLONIC STORM MEKUNU OVER ARABIAN  
SEA BASED ON 0000 UTC OF 26<sup>TH</sup> MAY 2018**



DATE/TIME IN UTC  
IST = UTC + 0530 HRS  
D: DEPRESSION  
DD: DEEP DEPRESSION  
CS: CYCLONIC STORM  
SCS: SEVERE CYCLONIC STORM  
VSCS: VERY SEVERE CYCLONIC STORM  
ECS: EXTREMELY SEVERE CYCLONIC STORM

— OBSERVED TRACK  
— FORECAST TRACK

**AREA OF MAXIMUM SUSTAINED WIND**

- 28-33 KTS
- 34-49 KTS
- 50-63 KTS
- ≥ 64 KTS

Contact: Cyclone Warning Division, Office of the Director General of Meteorology,  
India Meteorological Department, Ministry of Earth Sciences.

Phone: (91) 11-24652484, FAX: (91) 11-24643128, 24623220, E-mail: [cwdhq2008@gmail.com](mailto:cwdhq2008@gmail.com), Website: [rsmcnewdelhi.imd.gov.in](http://rsmcnewdelhi.imd.gov.in)

Spatial rainfall distribution: Isolated: <25%, A few: 26-50%, Many: 51-75%, Most: 76-100%

Rainfall amount (mm): Heavy rain: 64.5 – 115.5, Very heavy rain: 115.6 – 204.4, Extremely heavy rain: 204.5 or more.