



**Government of India
Ministry of Earth Sciences
Earth System Science Organisation**



**Earth System Science Organisation
India Meteorological Department**

PRESS RELEASE-6

Time of issue: 1230 hours IST

Dated: 25-05-2018

Sub: Extremely Severe Cyclonic Storm “Mekunu” over westcentral Arabian Sea

The **Very Severe Cyclonic Storm “Mekunu”** moved north-northwestwards, intensified into an **Extremely Severe Cyclonic Storm** at 0830 hrs IST of today, 25th May 2018 over westcentral Arabian Sea near latitude 15.4° N and longitude 54.5° E, about 310 km north-northeast of Socotra Islands and 180 km south-southeast of Salalah (Oman).

It is very likely to move north-northwestwards and cross south Oman-southeast Yemen coasts between 53°E and 54°E close to south of Salalah, around midnight of today, the 25th May, 2018.

The forecast track positions and intensity are given in table below:

Date/Time(IST)	Position (Lat. °N/ long. °E)	Maximum sustained surface wind speed (kmph)	Category of cyclonic disturbance
25/0830	15.4/54.5	160-170 gusting to 180	Extremely Severe Cyclonic Storm
25/1130	15.7/54.3	160-170 gusting to 180	Extremely Severe Cyclonic Storm
25/1730	16.3/53.9	160-170 gusting to 180	Extremely Severe Cyclonic Storm
25/2330	16.6/53.6	160-170 gusting to 180	Extremely Severe Cyclonic Storm
26/0530	17.0/53.3	125-135 gusting to 145	Very Severe Cyclonic Storm
26/1730	17.8/52.5	75-85 gusting to 95	Cyclonic Storm
27/0530	18.5/51.7	50-60 gusting to 70	Deep Depression
27/1730	19.2/50.9	35-45 gusting to 55	Depression

Warning:

As the system is expected to move away from Indian coast, no adverse weather is expected along & off west coast of India and Lakshadweep.

(i) Wind warning:

Gale winds speed reaching 160-170 kmph gusting to 180 Kmph is very likely to prevail over westcentral Arabian Sea during next 15 hours and wind gradually decrease becoming 120-130 kmph gusting to 145 kmph in subsequent 06 hours over Westcentral Arabian Sea.

(ii) Sea condition:

Sea condition is phenomenal over Westcentral Arabian Sea and will continue to be phenomenal till 26th morning. It will improve gradually thereafter.

(iii) Fishermen Warning

Fishermen are advised not to venture into Westcentral Arabian Sea till 26th May.

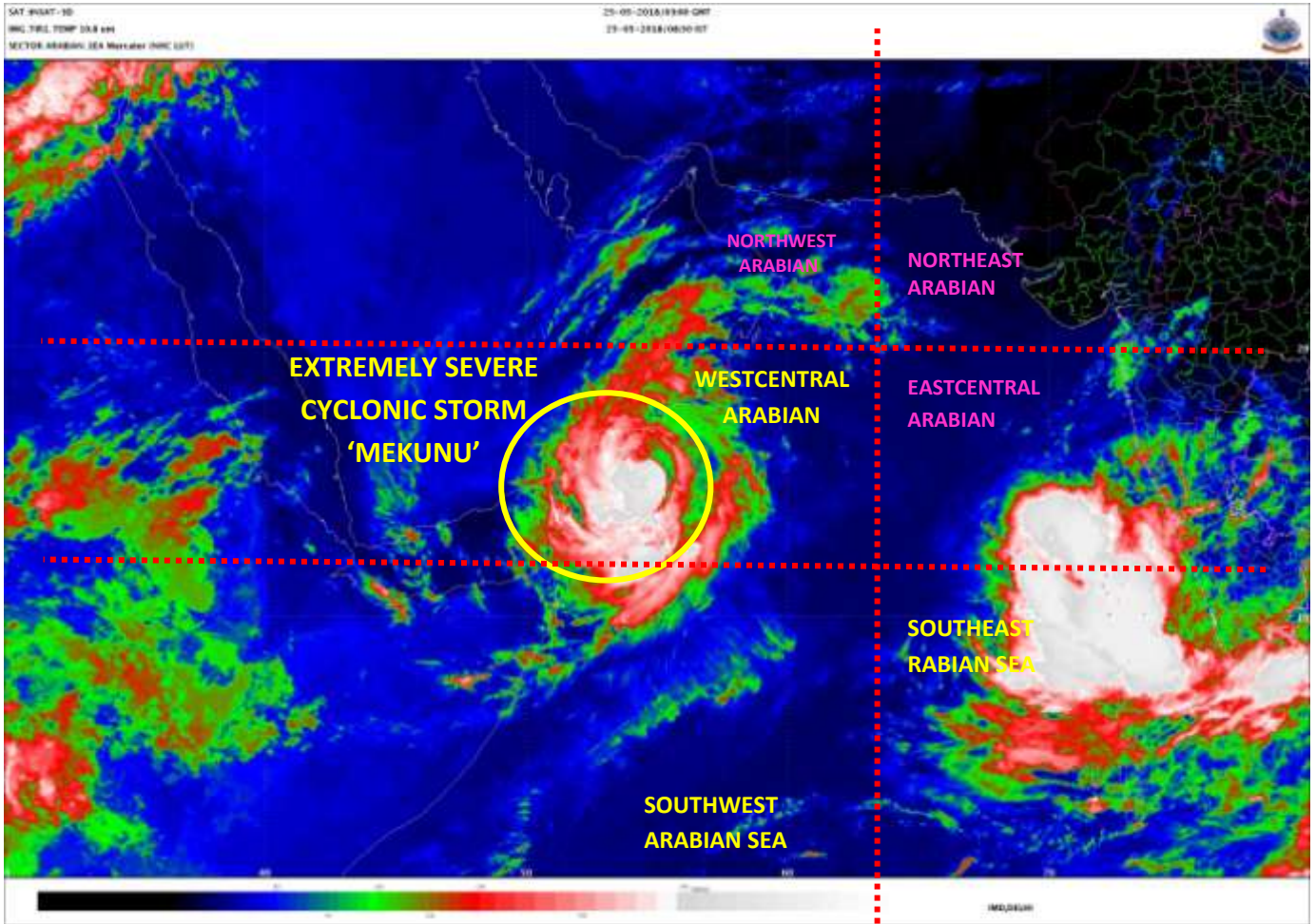
Kindly visit www.rsmcnewdelhi.imd.gov.in for updates on the system.

Contact: Cyclone Warning Division, Office of the Director General of Meteorology,
India Meteorological Department, Ministry of Earth Sciences.

Phone: (91) 11-24652484, FAX: (91) 11-24643128, 24623220, E-mail: cwdhq2008@gmail.com, Website: rsmcnewdelhi.imd.gov.in

Spatial rainfall distribution: Isolated: <25%, A few: 26-50%, Many: 51-75%, Most: 76-100%

Rainfall amount (mm): Heavy rain: 64.5 – 115.5, Very heavy rain: 115.6 – 204.4, Extremely heavy rain: 204.5 or more.



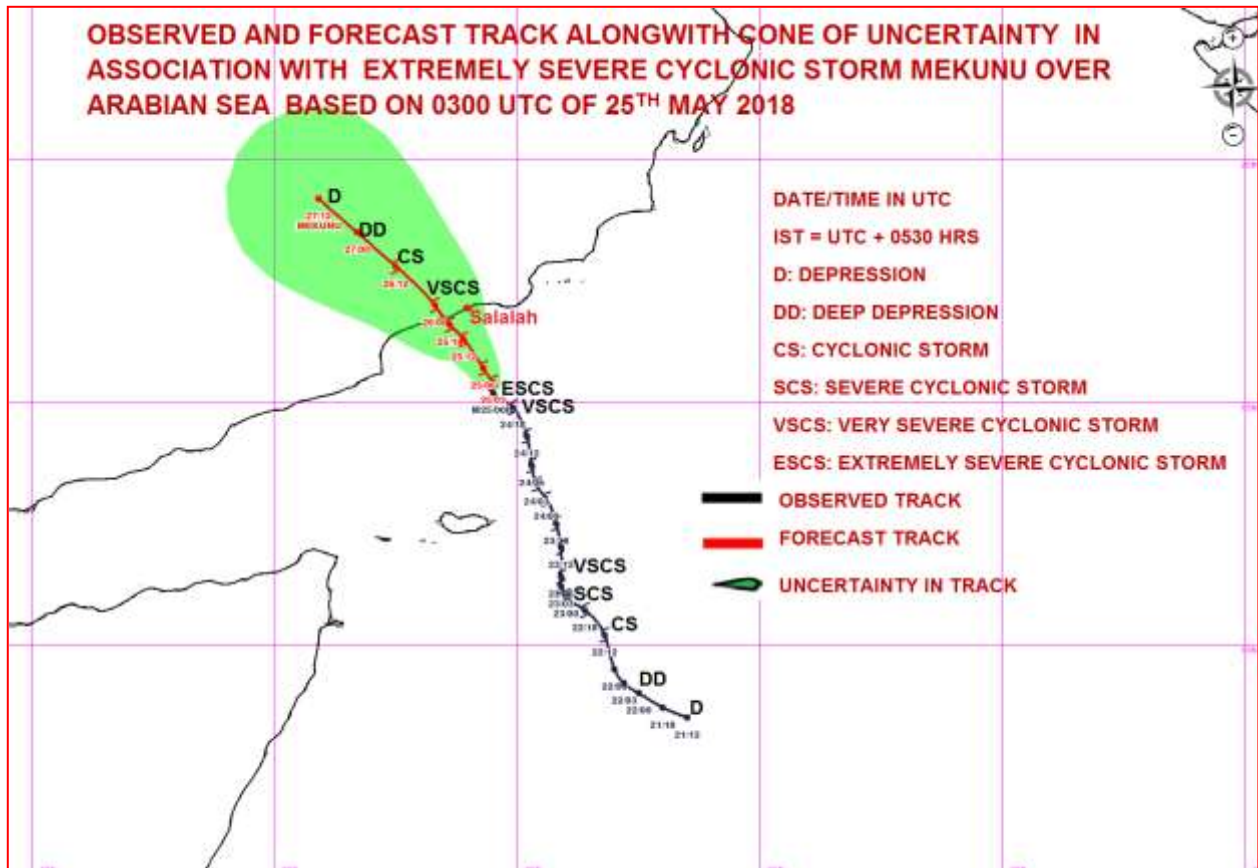
Contact: Cyclone Warning Division, Office of the Director General of Meteorology,
 India Meteorological Department, Ministry of Earth Sciences.

Phone: (91) 11-24652484, FAX: (91) 11-24643128, 24623220, E-mail: cwdhq2008@gmail.com, Website: rsmcnewdelhi.imd.gov.in

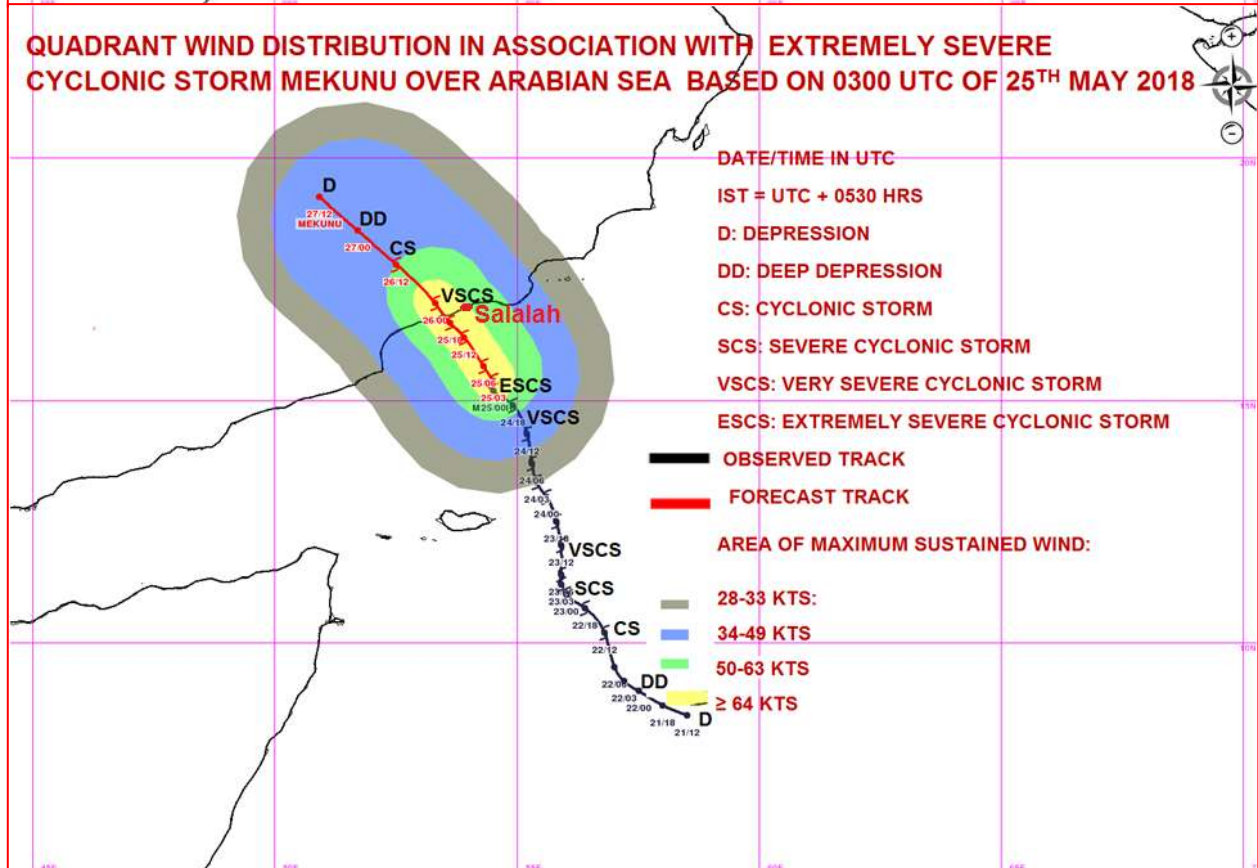
Spatial rainfall distribution: Isolated: <25%, A few: 26-50%, Many: 51-75%, Most: 76-100%

Rainfall amount (mm): Heavy rain: 64.5 – 115.5, Very heavy rain: 115.6 – 204.4, Extremely heavy rain: 204.5 or more.

OBSERVED AND FORECAST TRACK ALONGWITH CONE OF UNCERTAINTY IN ASSOCIATION WITH EXTREMELY SEVERE CYCLONIC STORM MEKUNU OVER ARABIAN SEA BASED ON 0300 UTC OF 25TH MAY 2018



QUADRANT WIND DISTRIBUTION IN ASSOCIATION WITH EXTREMELY SEVERE CYCLONIC STORM MEKUNU OVER ARABIAN SEA BASED ON 0300 UTC OF 25TH MAY 2018



Contact: Cyclone Warning Division, Office of the Director General of Meteorology,
 India Meteorological Department, Ministry of Earth Sciences.

Phone: (91) 11-24652484, FAX: (91) 11-24643128, 24623220, E-mail: cwdhq2008@gmail.com, Website: rsmcnewdelhi.imd.gov.in

Spatial rainfall distribution: Isolated: <25%, A few: 26-50%, Many: 51-75%, Most: 76-100%

Rainfall amount (mm): Heavy rain: 64.5 – 115.5, Very heavy rain: 115.6 – 204.4, Extremely heavy rain: 204.5 or more.