



Government of India
Ministry of Earth Sciences
Earth System Science Organisation



Earth System Science Organisation
India Meteorological Department

PRESS RELEASE-1

Time of issue: 1220 hours IST

Dated: 17-05-2018

Sub: Cyclonic Storm “Sagar” over Gulf of Aden

A depression formed over Gulf of Aden in the evening of yesterday, the 16th May 2018. Moving west-northwestwards it intensified into a deep depression in the early morning and further into a cyclonic storm “**Sagar**” at 0830 hours IST of today the 17th May 2018 over Gulf of Aden near latitude 13.2^oN and longitude 48.7^oE; about 400 km east-northeast of Aden (Yemen) and 560 km west-northwest of Socotra Islands. It is very likely to intensify slightly further during next 12 hrs. It is very likely to move initially westwards during next 12 hrs and then west-southwestwards during subsequent 24 hrs.

Date/Time(IST)	Position (Lat. ^o N/ long. ^o E)	Maximum sustained surface wind speed (kmph)	Category of cyclonic disturbance
17/0830	13.2/48.7	65-75 gusting to 85	Cyclonic Storm
17/1130	13.2/48.5	65-75 gusting to 85	Cyclonic Storm
17/1730	13.0/47.6	70-80 gusting to 90	Cyclonic Storm
17/2330	12.8/47.0	70-80 gusting to 90	Cyclonic Storm
18/0530	12.7/46.5	55-65 gusting to 75	Deep Depression
18/1730	12.5/45.2	45-55 gusting to 65	Depression

Warning:

(i) Wind warning:

Gale winds speed reaching 65-75 kmph gusting to 85 kmph is very likely around the system centre covering Gulf of Aden and adjoining areas of westcentral and southwest Arabian Sea during the next 24 hrs and gradual decrease thereafter.

(ii) Sea condition:

Sea condition will be high around the system centre covering Gulf of Aden and adjoining areas of westcentral and southwest Arabian Sea during the next 24 hrs.

(iii) Fishermen Warning

Fishermen are advised not to venture into Gulf of Aden and adjoining areas of westcentral and southwest Arabian Sea during the next 48 hrs.

Contact: Cyclone Warning Division, Office of the Director General of Meteorology,
India Meteorological Department, Ministry of Earth Sciences.

Phone: (91) 11-24652484, FAX: (91) 11-24643128, 24623220, E-mail: cwdhq2008@gmail.com, Website: rsmcnewdelhi.imd.gov.in

Spatial rainfall distribution: Isolated: <25%, A few: 26-50%, Many: 51-75%, Most: 76-100%

Rainfall amount (mm): Heavy rain: 64.5 – 115.5, Very heavy rain: 115.6 – 204.4, Extremely heavy rain: 204.5 or more.

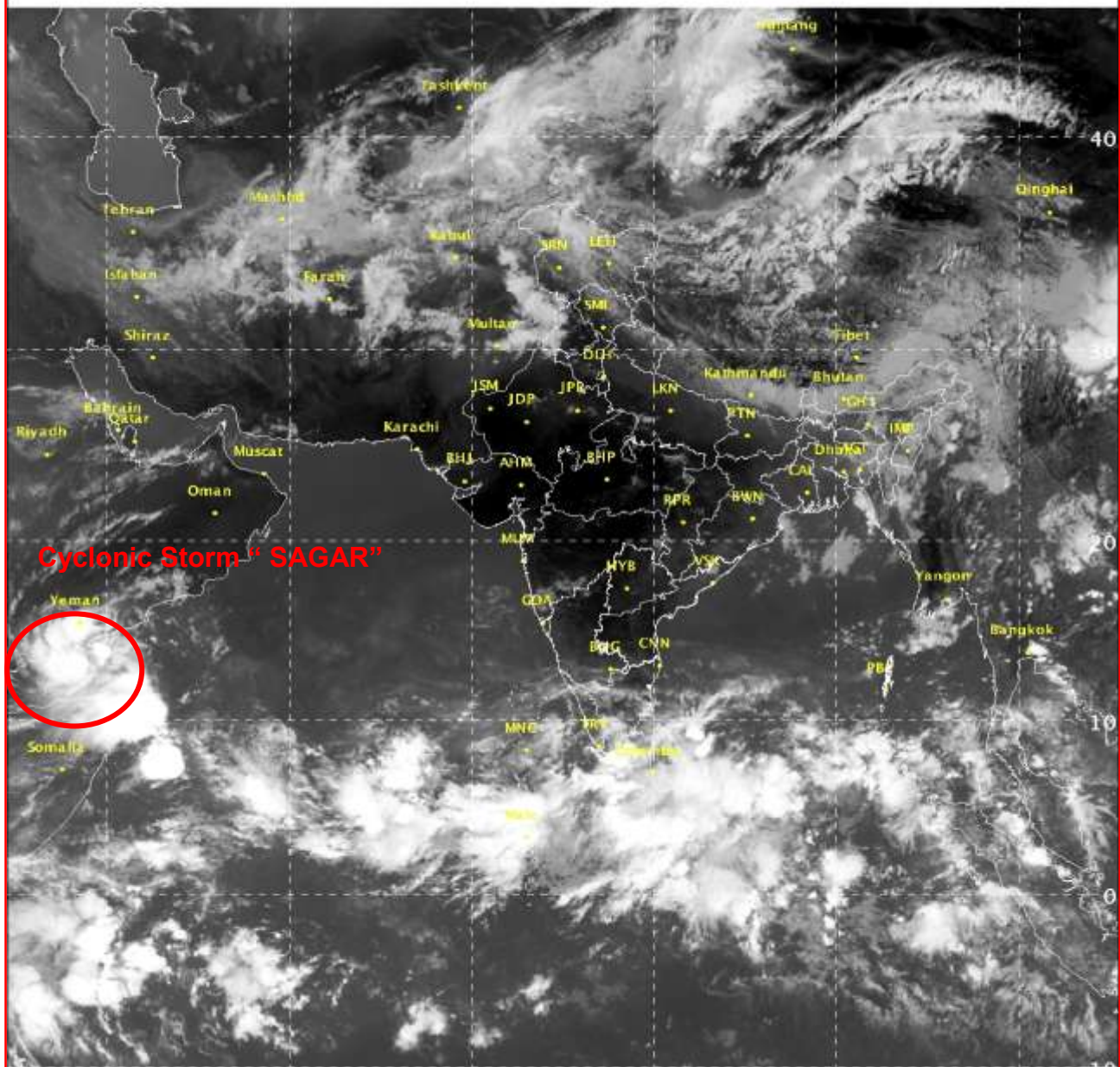
SAT :INSAT-3D IMG

IMG_TIR1 10.8 um

L1C Mercator (LINEAR STRETCH: 1.0%)

17-05-2018/04:30 GMT

17-05-2018/10:00 IST



384

902

IMD/Delhi

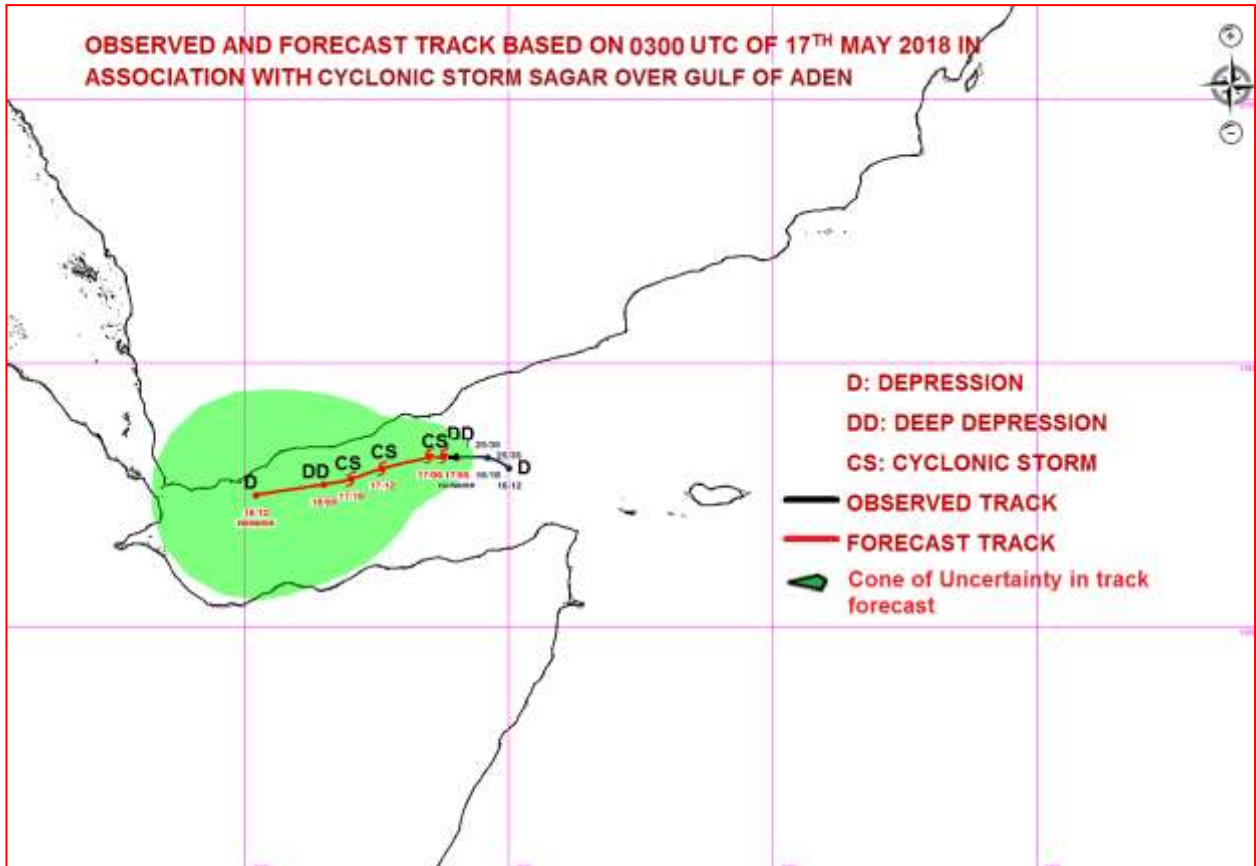
Contact: Cyclone Warning Division, Office of the Director General of Meteorology,
India Meteorological Department, Ministry of Earth Sciences.

Phone: (91) 11-24652484, FAX: (91) 11-24643128, 24623220, E-mail: cwdhq2008@gmail.com, Website: rsmcnewdelhi.imd.gov.in

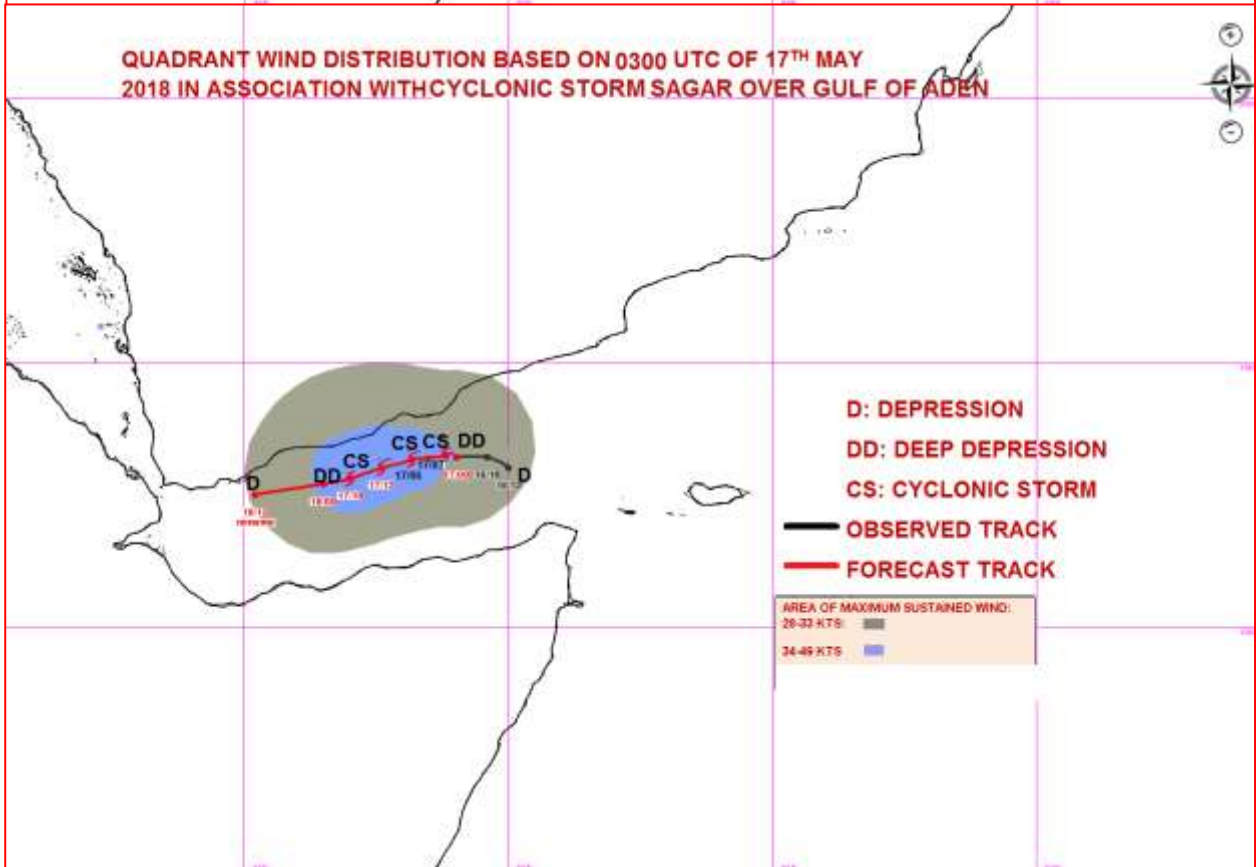
Spatial rainfall distribution: Isolated: <25%, A few: 26-50%, Many: 51-75%, Most: 76-100%

Rainfall amount (mm): Heavy rain: 64.5 – 115.5, Very heavy rain: 115.6 – 204.4, Extremely heavy rain: 204.5 or more.

OBSERVED AND FORECAST TRACK BASED ON 0300 UTC OF 17TH MAY 2018 IN ASSOCIATION WITH CYCLONIC STORM SAGAR OVER GULF OF ADEN



QUADRANT WIND DISTRIBUTION BASED ON 0300 UTC OF 17TH MAY 2018 IN ASSOCIATION WITH CYCLONIC STORM SAGAR OVER GULF OF ADEN



Contact: Cyclone Warning Division, Office of the Director General of Meteorology, India Meteorological Department, Ministry of Earth Sciences.

Phone: (91) 11-24652484, FAX: (91) 11-24643128, 24623220, E-mail: cwdhq2008@gmail.com, Website: rsmcnewdelhi.imd.gov.in

Spatial rainfall distribution: Isolated: <25%, A few: 26-50%, Many: 51-75%, Most: 76-100%

Rainfall amount (mm): Heavy rain: 64.5 – 115.5, Very heavy rain: 115.6 – 204.4, Extremely heavy rain: 204.5 or more.