



Government of India  
Ministry of Earth Sciences  
Earth System Science Organisation



Earth System Science Organisation  
India Meteorological Department

## PRESS RELEASE - 13

Time of issue: 1230 hours IST

Dated: 09-12-2017

### Sub: Depression over northwest Bay of Bengal

Yesterday's **Deep Depression** over westcentral Bay of Bengal (BoB) moved north-northwestwards and weakened into a **Depression** over westcentral & adjoining northwest BoB around midnight of 8<sup>th</sup> December, 2017. It then moved nearly northwards and lay centered at 0830 hrs IST of today, the 09<sup>th</sup> December, 2017 over northwest BoB near latitude 19.2 °N and longitude 86.5 °E, about 170 km east of Gopalpur, 120 km south-southwest of Paradip and 320 km south-southwest of Digha. The system is very likely to move north-northeastwards along & off Odisha coast towards West Bengal and adjoining Bangladesh coast. It is very likely to maintain its intensity during 24 hours & weaken gradually into a well marked low during subsequent 12 hours.

### Warning:

#### Warnings:

#### (i) Heavy Rainfall:

- Light to moderate rainfall at many places very likely over coastal districts of north Odisha during next 12 hours.
- Rainfall at most places with heavy to very heavy falls at isolated places very likely over north and south 24 Pargana districts of West Bengal and heavy falls at isolated places over the remaining coastal districts of West Bengal during next 24 hours.
- Rainfall at most places with heavy falls at isolated places very likely over south Assam, eastern Meghalaya, Mizoram and Tripura during next 48 hours.

#### (ii) Wind:

- Squally winds speed reaching 45-55 kmph gusting to 65 kmph very likely to prevail along & off north Odisha and West Bengal coasts during next 24 hours and 35-45 kmph gusting to 55 kmph during subsequent 12 hours.
- Squally winds speed reaching 30-40 kmph gusting to 50 kmph is also very likely to prevail along & off south Odisha coast during next 12 hours.

#### (iii) Sea Condition:

- Sea condition would be rough to very rough along & off south Odisha coast during next 12 hours and very rough along & off north Odisha and West Bengal coasts during next 36 hrs.

#### (iv) Action suggested:

- Fishermen along and off south Odisha coast are advised not to venture into sea during next 12 hours and along and off north Odisha and West Bengal coasts during next 36 hrs.

**The system is under constant surveillance & concerned State Govts. are kept informed.**

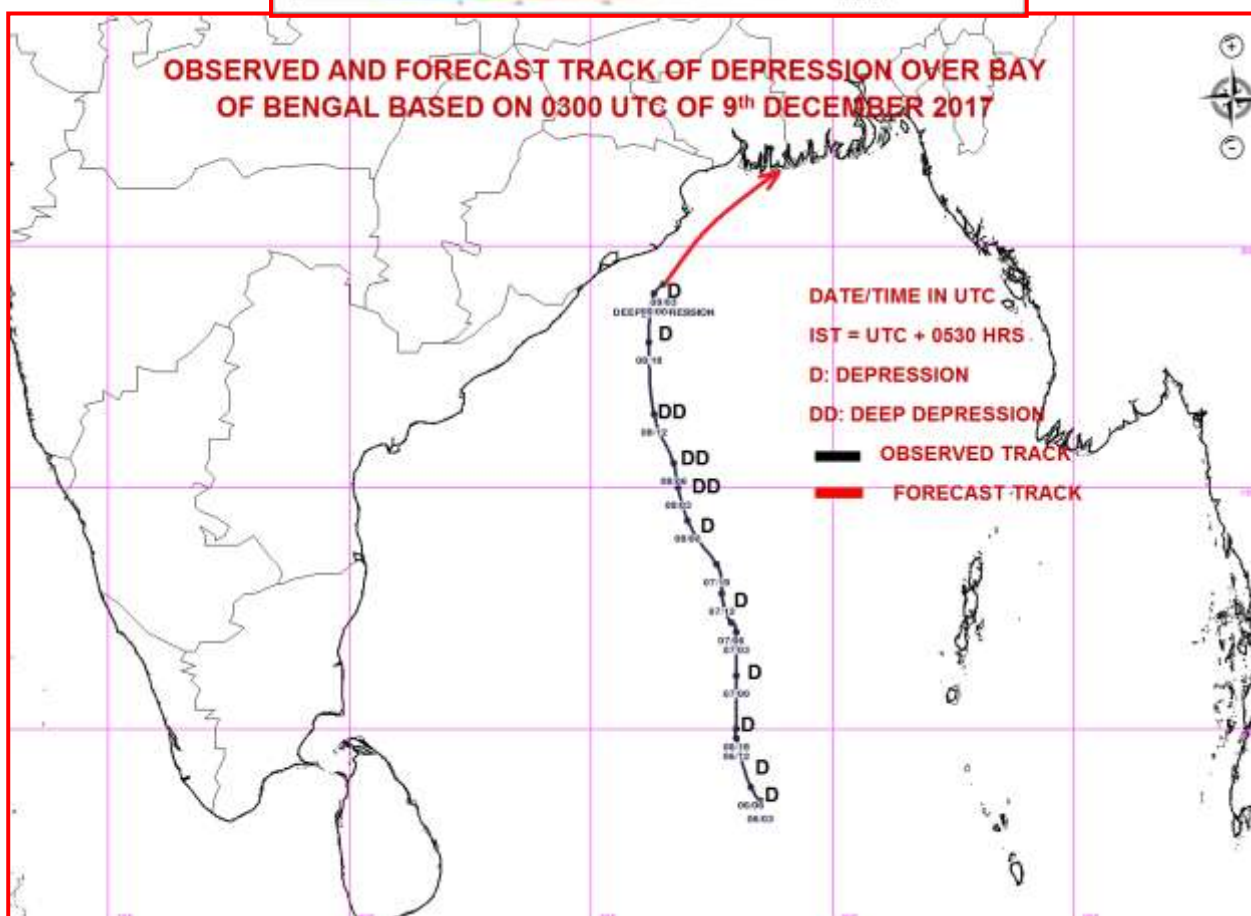
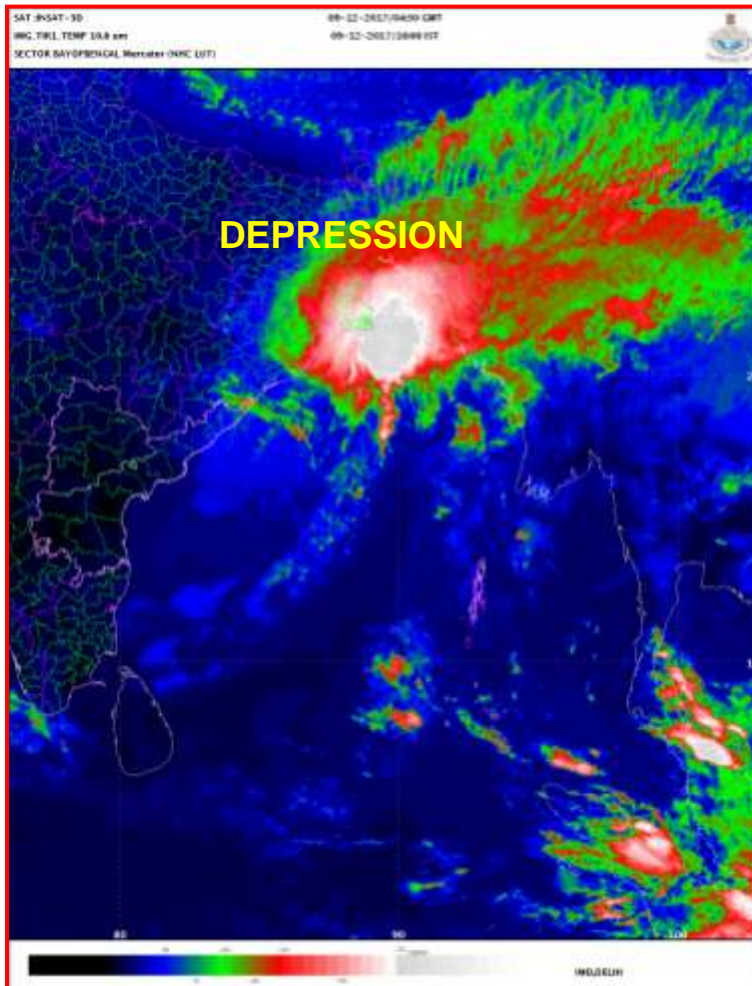
Contact: Cyclone Warning Division, Office of the Director General of Meteorology,

India Meteorological Department, Ministry of Earth Sciences.

Phone: (91) 11-24652484, FAX: (91) 11-24643128, 24623220, E-mail: [cwdhq2008@gmail.com](mailto:cwdhq2008@gmail.com), Website: [rsmcnewdelhi.imd.gov.in](http://rsmcnewdelhi.imd.gov.in)

Spatial rainfall distribution: Isolated: <25%, A few: 26-50%, Many: 51-75%, Most: 76-100%

Rainfall amount (mm): Heavy rain: 64.5 – 115.5, Very heavy rain: 115.6 – 204.4, Extremely heavy rain: 204.5 or more.



Contact: Cyclone Warning Division, Office of the Director General of Meteorology,  
 India Meteorological Department, Ministry of Earth Sciences.  
 Phone: (91) 11-24652484, FAX: (91) 11-24643128, 24623220, E-mail: cwdhq2008@gmail.com, Website: [rsmcnewdelhi.imd.gov.in](http://rsmcnewdelhi.imd.gov.in)  
 Spatial rainfall distribution: Isolated: <25%, A few: 26-50%, Many: 51-75%, Most: 76-100%  
 Rainfall amount (mm): Heavy rain: 64.5 – 115.5, Very heavy rain: 115.6 – 204.4, Extremely heavy rain: 204.5 or more.