



Government of India
Ministry of Earth Sciences
Earth System Science Organisation



Earth System Science Organisation
India Meteorological Department

PRESS RELEASE - 12

Time of issue: 1300 hours IST

Dated: 08-12-2017

Sub: Deep Depression over westcentral Bay of Bengal

Yesterday's **Depression** over southeast Bay of Bengal moved north-northwestwards, intensified into a **Deep Depression** in the early morning of today. It lay centred at 0830 hrs IST of today, the 08th December, 2017 over westcentral Bay of Bengal near Latitude 15.0 °N and Longitude 86.8 °E, about 510 km south-southeast of Gopalpur and 610 km east-southeast of Machilipatnam. It is likely to maintain intensity of deep depression for about 12 hrs and weaken gradually into a depression during subsequent 12 hrs. The system is very likely to move north-northwestwards and reach north Andhra Pradesh and south Odisha coasts around 9th December morning as a depression.

Warning:

(i) **Heavy Rainfall:**

- Rainfall at most places with heavy falls at isolated places very likely over north Andhra Pradesh (Visakhapatnam, Vijayanagaram, Srikakulam districts) during next 24 hrs, over coastal and adjoining interior districts of Odisha during 8th to 9th, over north coastal Odisha and adjoining districts of interior Odisha on 10th and over coastal districts of West Bengal during 8th to 10th.
- Rainfall at most places with heavy falls at isolated places very likely over south Assam, Meghalaya, Mizoram and Tripura during 9th to 11th December 2017.

(ii) **Wind:**

- Squally winds speed reaching 40-50 kmph gusting to 60 kmph very likely to prevail along and off south Andhra Pradesh coast during next 24 hours, along and off north Andhra Pradesh Odisha and West Bengal coasts during next 36 hrs.

(iii) **Sea Condition:**

- Sea condition would be rough to very rough along and off south Andhra Pradesh coast during next 24 hours, along and off north Andhra Pradesh, Odisha and West Bengal coasts during next 36 hrs.

(iv) **Action suggested:**

- Fishermen along and off south Andhra Pradesh coast are advised not to venture into sea during next 24 hours, along and off north Andhra Pradesh, Odisha and West Bengal coasts are advised not to venture into sea during next 36 hrs.

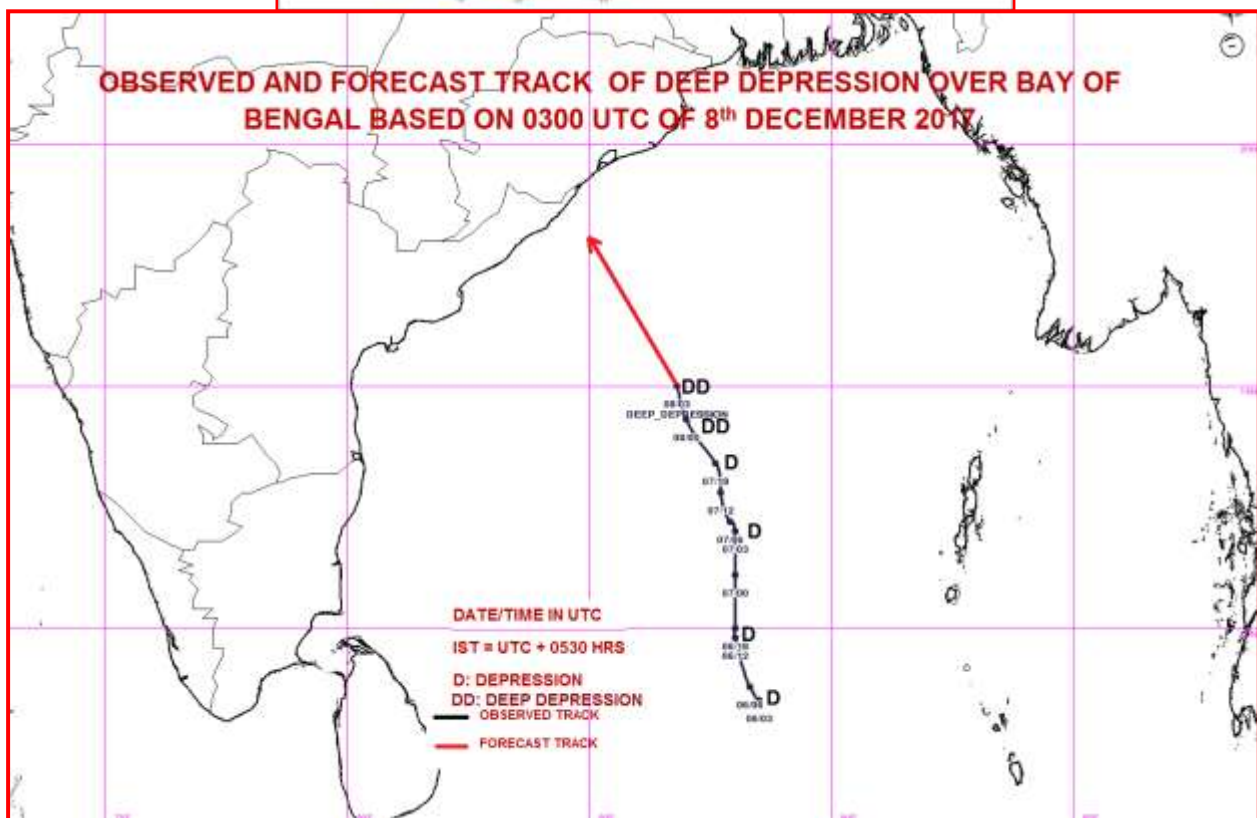
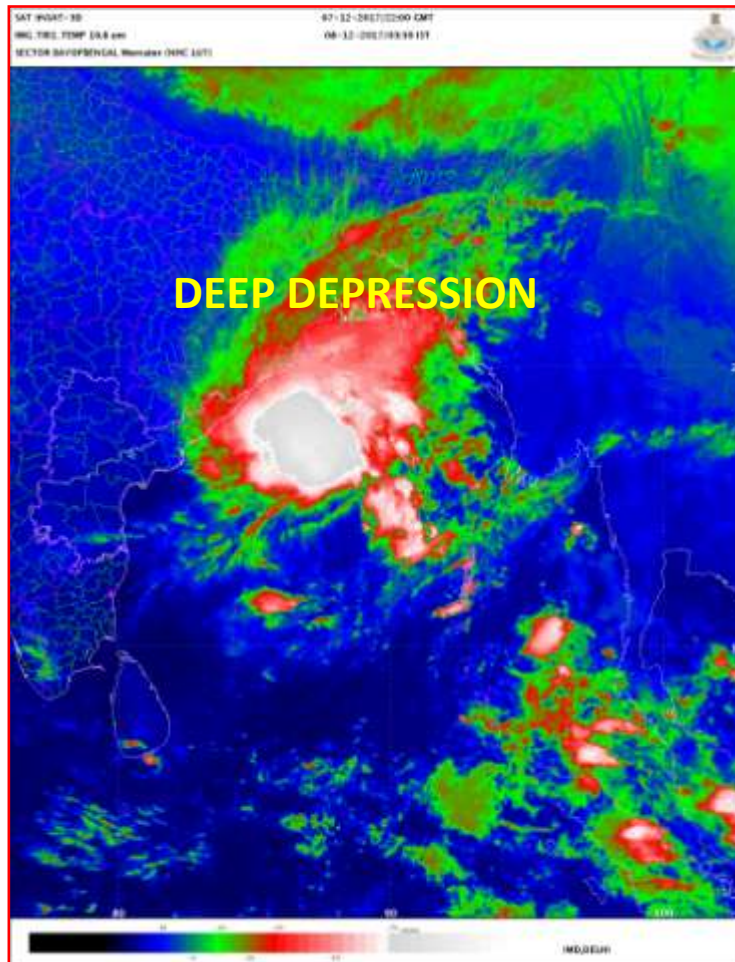
The system is under constant surveillance & concerned State Govts. are kept informed.

Contact: Cyclone Warning Division, Office of the Director General of Meteorology,
India Meteorological Department, Ministry of Earth Sciences.

Phone: (91) 11-24652484, FAX: (91) 11-24643128, 24623220, E-mail: cwdhq2008@gmail.com, Website: rsmcnewdelhi.imd.gov.in

Spatial rainfall distribution: Isolated: <25%, A few: 26-50%, Many: 51-75%, Most: 76-100%

Rainfall amount (mm): Heavy rain: 64.5 – 115.5, Very heavy rain: 115.6 – 204.4, Extremely heavy rain: 204.5 or more.



Contact: Cyclone Warning Division, Office of the Director General of Meteorology,
 India Meteorological Department, Ministry of Earth Sciences.

Phone: (91) 11-24652484, FAX: (91) 11-24643128, 24623220, E-mail: cwdhq2008@gmail.com, Website: rsmcnwdelhi.imd.gov.in

Spatial rainfall distribution: Isolated: <25%, A few: 26-50%, Many: 51-75%, Most: 76-100%

Rainfall amount (mm): Heavy rain: 64.5 – 115.5, Very heavy rain: 115.6 – 204.4, Extremely heavy rain: 204.5 or more.