



India Meteorological Department
Earth System Science Organisation
(Ministry of Earth Sciences)

BULLETIN NO. : 04 (BOB/05/2018)

TIME OF ISSUE: 0130 HOURS IST

DATED: 16.08.2018

FROM: INDIA METEOROLOGICAL DEPARTMENT (FAX NO. 24643965/24699216/24623220)

TO: CONTROL ROOM, NDM, MINISTRY OF HOME AFFAIRS (FAX.NO. 23093750)

CONTROL ROOM NDMA (FAX.NO. 26701729)

CABINET SECRETARIAT (FAX.NO.23012284, 23018638)

PS TO HON'BLE MINISTER FOR S & T AND EARTH SCIENCES (FAX NO.23316745)

SECRETARY, MOES, (FAX NO. 24629777)

H.Q. (INTEGRATED DEFENCE STAFF AND CDS) (FAX NO. 23005137/23005147)

DIRECTOR GENERAL, DOORDARSHAN (23385843)

DIRECTOR GENERAL, AIR (23421105, 23421219)

PIB MOES (FAX NO. 23389042)

UNI (FAX NO. 23355841)

D.G. NATIONAL DISASTER RESPONSE FORCE (NDRF) (FAX NO. 26105912)

DIRECTOR, PUNCTUALITY, INDIAN RAILWAYS (FAX NO. 23388503)

CHIEF SECRETARY, GOVT. OF ODISHA (FAX NO. 0674 -2536660)

CHIEF SECRETARY, CHATTISGARH (FAX NO. 0771-2221206)

CHIEF SECRETARY, MADHYA PRADESH (FAX NO. 0755 -2551521)

CHIEF SECRETARY, WEST BENGAL (FAX NO. 033-22144328)

CHIEF SECRETARY, JHARKHAND (FAX NO. 0651-2400255)

CHIEF SECRETARY, MAHARASHTRA (FAX NO. 022- 22028594)

CHIEF SECRETARY, GUJARAT (FAX NO. 079-23250305)

CHIEF SECRETARY, RAJASTHAN (FAX NO.0141-2227114)

CHIEF SECRETARY, ANDHRA PRADESH (FAX NO. 0866-2441029)

CHIEF SECRETARY, TELANGANA (FAX NO. 040- 23452620)

Sub: Depression over Odisha

The Depression over Odisha has moved west northwest direction and lay centered at 2330 hrs IST of 15th August, 2018 over Odisha near latitude 20.2°N and longitude 84.0°E, about 70 km east-southeast of Titlagarh (42961) and 270 km east-southeast of Raipur (42874). It is very likely to move west-northwestwards and weaken gradually into a well marked low pressure area during next 12 hours.

Warning

(a) Rainfall:

- Rainfall at most places with heavy to very heavy rainfall at a few places and **extremely heavy falls** at isolated places is very likely over south Chhattisgarh and north Telangana during next 12 hours and heavy to very heavy rainfall at isolated places during subsequent 12 hours over these regions. Rainfall at many places with heavy rainfall at isolated likely over south interior Odisha and north Chhattisgarh during next 24 hours.
- Gujarat region is likely to receive heavy to very heavy rain at a few places and **extremely heavy falls** at isolated places on 17th and heavy rain at a few places with very heavy rain at isolated places on 18th August. Saurashtra and Kutch is likely to receive heavy to very heavy rain at isolated places on 17th and 18th.
- Rainfall at most places with heavy to very heavy rainfall at a few places likely over Vidarbha on 16th August, 2018 and heavy to very heavy rainfall at isolated places over Vidarbha on 17th August, 2018.
- Rainfall at most places with heavy to very heavy rainfall at isolated places likely over East Madhya Pradesh on 16th August, 2018 and over southwest Madhya Pradesh, north Madhya Maharashtra, north Konkan and Marathwada on 16th and 17th August, 2018.

Spatial rainfall distribution: Isolated: <25%, A few: 26-50%, Many: 51-75%, Most: 76-100%

Rainfall amount (mm): Heavy rain: 64.5 – 115.5, Very heavy rain: 115.6 – 204.4, Extremely heavy rain: 204.5 or more.

(b) Wind Warning:

Squally wind speed reaching 40-50 kmph gusting to 60 kmph is very likely over Northwest Bay of Bengal and along & off Odisha and adjoining north Andhra Pradesh coasts during next 12 hrs.

(c) Sea condition:

Sea condition will be rough to very rough over Northwest Bay of Bengal and along & off Odisha and adjoining north Andhra Pradesh coasts during the next 12 hrs.

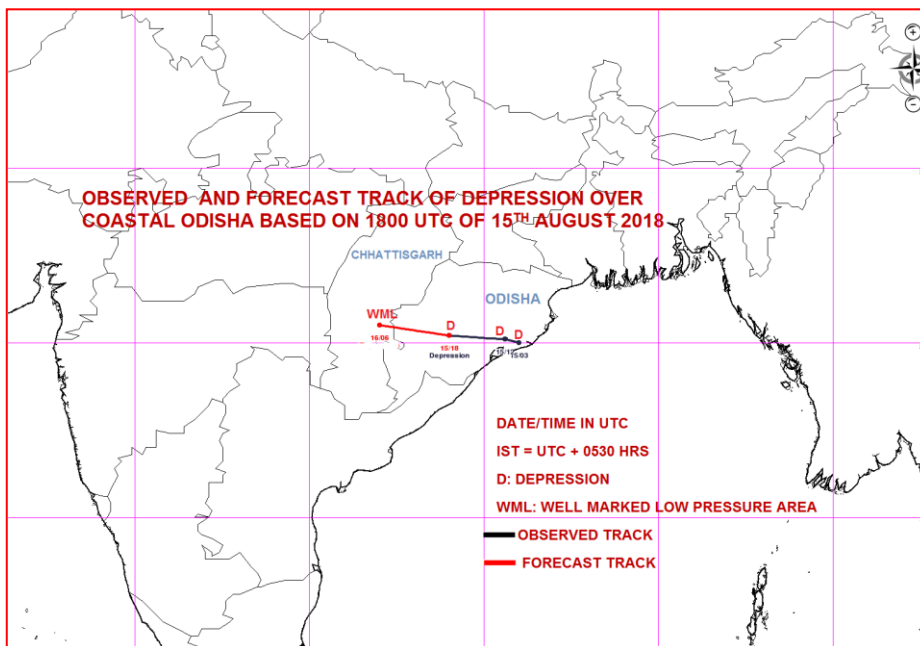
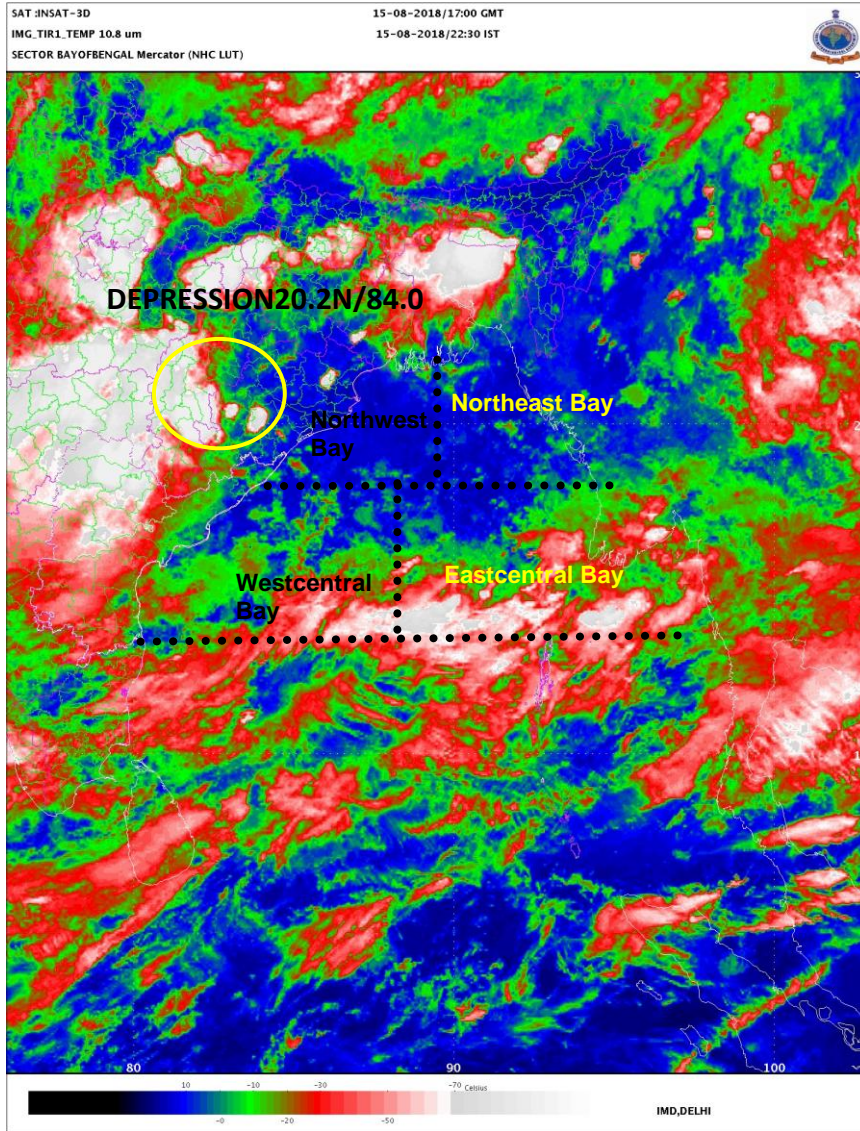
(d) Fishermen warning:

Fishermen are advised not to venture into Northwest Bay of Bengal and along & off Odisha and adjoining north Andhra Pradesh coast during next 12 hrs.

The next bulletin will be issued at 0830 hrs IST of 16th August, 2018.

**(Shobhit Katiyar)
Scientist-B, RSMC, New Delhi**

*Copy to: CRS, Pune/ ACWC Kolkata/ Mumbai/Chennai/CWC Bhubaneswar/Ahmedabad/MC
Raipur/Bhopal/Jaipur/Hyderabad*



Spatial rainfall distribution: Isolated: <25%, A few: 26-50%, Many: 51-75%, Most: 76-100%
Rainfall amount (mm): Heavy rain: 64.5 – 115.5, Very heavy rain: 115.6 – 204.4, Extremely heavy rain: 204.5 or more.