



**India Meteorological Department
Earth System Science Organisation
(Ministry of Earth Sciences)**

BULLETIN NO. : 05 (BOB/04/2018)

TIME OF ISSUE: 1130 HOURS IST

DATED: 08.08.2018

FROM: INDIA METEOROLOGICAL DEPARTMENT (FAX NO. 24643965/24699216/24623220)

TO: CONTROL ROOM, NDM, MINISTRY OF HOME AFFAIRS (FAX.NO. 23093750)

CONTROL ROOM NDMA (FAX.NO. 26701729)

CABINET SECRETARIAT (FAX.NO.23012284, 23018638)

PS TO HON'BLE MINISTER FOR S & T AND EARTH SCIENCES (FAX NO.23316745)

SECRETARY, MOES, (FAX NO. 24629777)

H.Q. (INTEGRATED DEFENCE STAFF AND CDS) (FAX NO. 23005137/23005147)

DIRECTOR GENERAL, DOORDARSHAN (23385843)

DIRECTOR GENERAL, AIR (23421105, 23421219)

PIB MOES (FAX NO. 23389042)

UNI (FAX NO. 23355841)

D.G. NATIONAL DISASTER RESPONSE FORCE (NDRF) (FAX NO. 26105912)

DIRECTOR, PUNCTUALITY, INDIAN RAILWAYS (FAX NO. 23388503)

CHIEF SECRETARY, GOVT. OF ODISHA (FAX NO. 0674 -2536660)

CHIEF SECRETARY, CHATTISGARH (FAX NO. 0771-2221206)

CHIEF SECRETARY, MADHYA PRADESH (FAX NO. 0755 -2551521)

CHIEF SECRETARY, WEST BENGAL (FAX NO. 033-22144328)

CHIEF SECRETARY, JHARKHAND (FAX NO. 0651-2400255)

CHIEF SECRETARY, MAHARASHTRA (FAX NO. 022- 22028594)

CHIEF SECRETARY, GUJARAT (FAX NO. 079-23250305)

CHIEF SECRETARY, RAJASTHAN (FAX NO.0141-2227114)

CHIEF SECRETARY, ANDHRA PRADESH (FAX NO. 0866-2441029)

CHIEF SECRETARY, TELANGANA (FAX NO. 040- 23452620)

Sub: Depression weakened into a Well Marked Low Pressure Area over north Chattisgarh & neighbourhood.

The Depression over north interior Odisha & neighbourhood moved west-northwestwards and weakened into a Well Marked Low Pressure Area over north Chattisgarh & neighbourhood at 0830 hrs IST of 08th August, 2018.

Rainfall Warning:

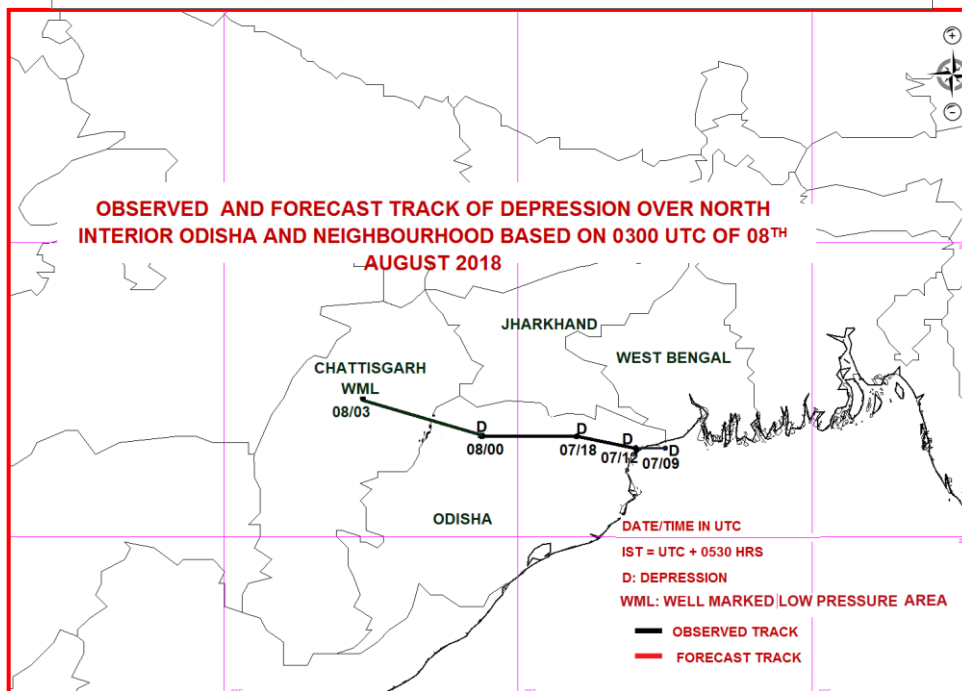
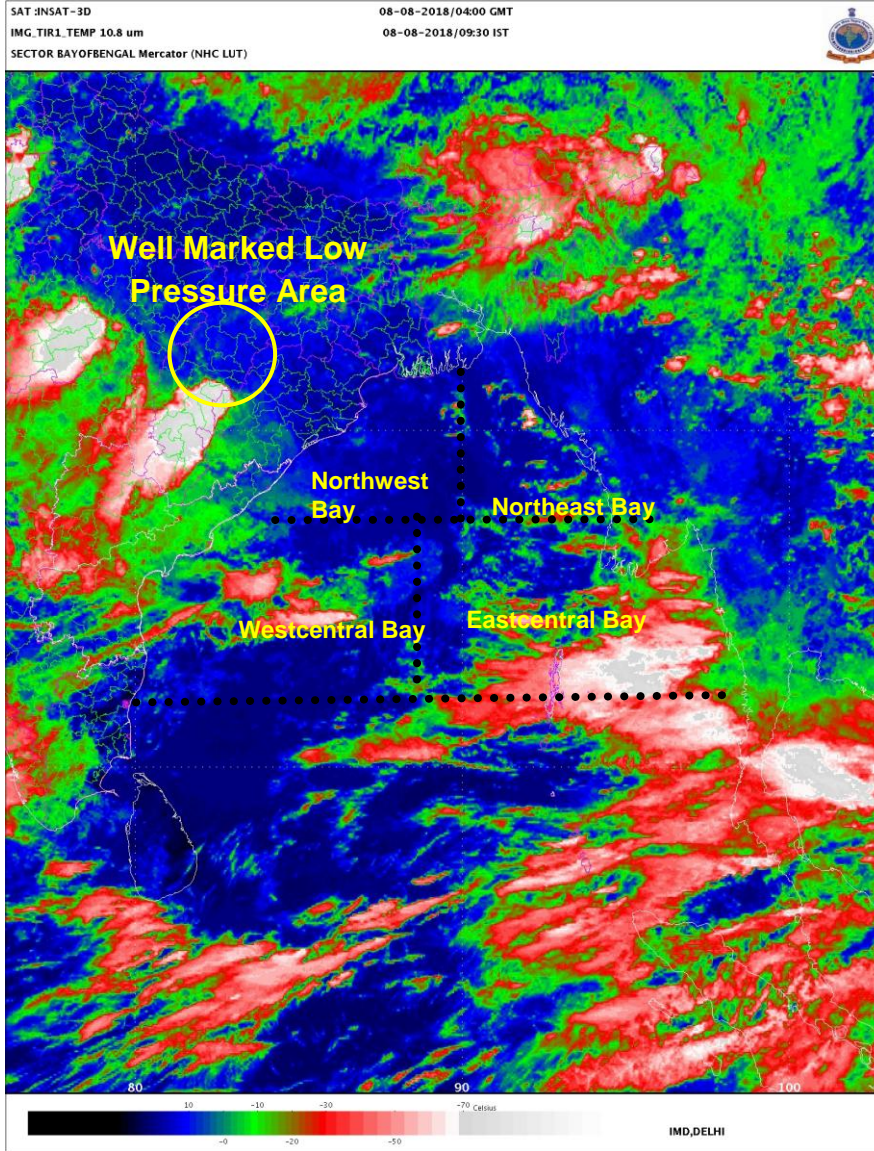
- Under the influence of this system, rainfall at most places with heavy to very heavy rain at a few places is very likely over south Chhattisgarh and heavy at isolated places over north Chhattisgarh during next 24 hours.
- Rainfall at most places with isolated heavy to very heavy falls very likely during next 24 hours and isolated heavy for subsequent 24 hours over East Madhya Pradesh.
- Rainfall at most places with isolated heavy to very heavy falls very likely during next 48 hours and isolated heavy for subsequent 24 hours over West Madhya Pradesh.
- Rainfall at most places with isolated heavy falls very likely during next 24 hours and isolated heavy to very heavy for subsequent 24 hours over East Rajasthan.
- Rainfall at most places with isolated heavy falls very likely over Vidharbha and Telangana during next 24 hours.

This is the last bulletin for this system. However the regular bulletins will continue to be issued by concerned Meteorological Centres, Regional Meteorological Centres and National Weather Forecasting Centre.

**(Naresh Kumar)
Scientist-E, RSMC, New Delhi**

Copy to: CRS, Pune/ ACWC Kolkata/ Mumbai/Chennai/CWC Bhubaneswar/Ahmedabad/MC Raipur/Bhopal/Jaipur

Spatial rainfall distribution: Isolated: <25%, A few: 26-50%, Many: 51-75%, Most: 76-100%
Rainfall amount (mm): Heavy rain: 64.5 – 115.5, Very heavy rain: 115.6 – 204.4, Extremely heavy rain: 204.5 or more.



Spatial rainfall distribution: Isolated: <25%, A few: 26-50%, Many: 51-75%, Most: 76-100%
 Rainfall amount (mm): Heavy rain: 64.5 – 115.5, Very heavy rain: 115.6 – 204.4, Extremely heavy rain: 204.5 or more.