



**India Meteorological Department  
Earth System Science Organisation  
(Ministry of Earth Sciences)**

**BULLETIN NO. : 02 (ARB 02/2018)**

**TIME OF ISSUE: 0100 HOURS IST**

**DATED: 17.05.2018**

**FROM: INDIA METEOROLOGICAL DEPARTMENT (FAX NO. 24643965/24699216/24623220)**

**TO: CONTROL ROOM, NDM, MINISTRY OF HOME AFFAIRS (FAX.NO. 23093750)  
CONTROL ROOM NDMA (FAX.NO. 26701729)  
CABINET SECRETARIAT (FAX.NO.23012284, 23018638)  
PS TO HON'BLE MINISTER FOR S & T AND EARTH SCIENCES (FAX NO.23316745)  
SECRETARY, MOES, (FAX NO. 24629777)  
H.Q. (INTEGRATED DEFENCE STAFF AND CDS) (FAX NO. 23005137/23005147)  
DIRECTOR GENERAL, DOORDARSHAN (23385843)  
DIRECTOR GENERAL, AIR (23421105, 23421219)  
PIB MOES (FAX NO. 23389042)  
UNI (FAX NO. 23355841)  
D.G. NATIONAL DISASTER RESPONSE FORCE (NDRF) (FAX NO. 26105912)  
DIRECTOR, PUNCTUALITY, INDIAN RAILWAYS (FAX NO. 23388503)  
CHIEF SECRETARY, TAMILNADU (FAX NO. 044-25672304)  
CHIEF SECRETARY, KERALA (FAX NO. 0471-2327176)  
ADMINISTRATOR, LAKSHADWEEP ISLANDS (FAX NO. 04896-262184)  
ADMINISTRATOR, UNION TERRITORY OF DAMAN & DIU AND DADRA NAGAR HAVELI (0260-2230775)  
CHIEF SECRETARY, KARNATAKA (FAX NO. 080-22258913)  
CHIEF SECRETARY, GOA (FAX NO. 0832-2415201)  
CHIEF SECRETARY, MAHARASHTRA (FAX NO. 022- 22028594)  
CHIEF SECRETARY, GUJARAT (FAX NO. 079-23250305)**

**Sub: Depression over Gulf of Aden**

Latest observations and satellite imageries indicate that the depression over Gulf of Aden moved west-northwestwards with a speed of about 08 kmph during last 06 hours and lay centered at 2330 hrs IST of yesterday, the 16th May 2018 near latitude 13.2°N and longitude 49.6°E over the same region; about 500 km east-northeast of Aden (Yemen) and 470 km west-northwest of Socotra Islands. It is very likely to intensify further into a deep depression during next 12 hrs. It is very likely to move initially west-northwestwards towards Yemen coast during next 24 hrs and then west-southwestwards during subsequent 36 hrs.

| Date/Time(IST) | Position (Lat. °N/ long. °E) | Maximum sustained surface wind speed (kmph) | Category of cyclonic disturbance |
|----------------|------------------------------|---|----------------------------------|
| 16/2330        | 13.2/49.6                    | 45-55 GUSTING TO 65                         | DEPRESSION                       |
| 17/1130        | 13.4/48.3                    | 55-65 GUSTING TO 75                         | DEEP DEPRESSION                  |
| 17/2330        | 13.3/46.7                    | 65-75 GUSTING TO 85                         | CYCLONIC STORM                   |
| 18/1130        | 12.5/45.3                    | 55-65 GUSTING TO 75                         | DEEP DEPRESSION                  |
| 18/2330        | 12.0/44.0                    | 40-50 GUSTING TO 60                         | DEPRESSION                       |

**Spatial rainfall distribution: Isolated: <25%, A few: 26-50%, Many: 51-75%, Most: 76-100%**  
**Rainfall amount (mm): Heavy rain: 64.5 – 115.5, Very heavy rain: 115.6 – 204.4, Extremely heavy rain: 204.5 or more.**

## Warning

### **(a) Wind**

Squally winds speed reaching 45-55 kmph gusting to 65 kmph is very likely around the system centre covering Gulf of Aden and adjoining areas of westcentral and southwest Arabian Sea during the next 06 hrs. It would then increase gradually becoming 65-75 kmph gusting to 85 kmph during subsequent 24 hours.

### **(b) Sea condition**

Sea condition will be rough to very rough around the system centre covering Gulf of Aden and adjoining areas of westcentral and southwest Arabian Sea during the next 48 hrs.

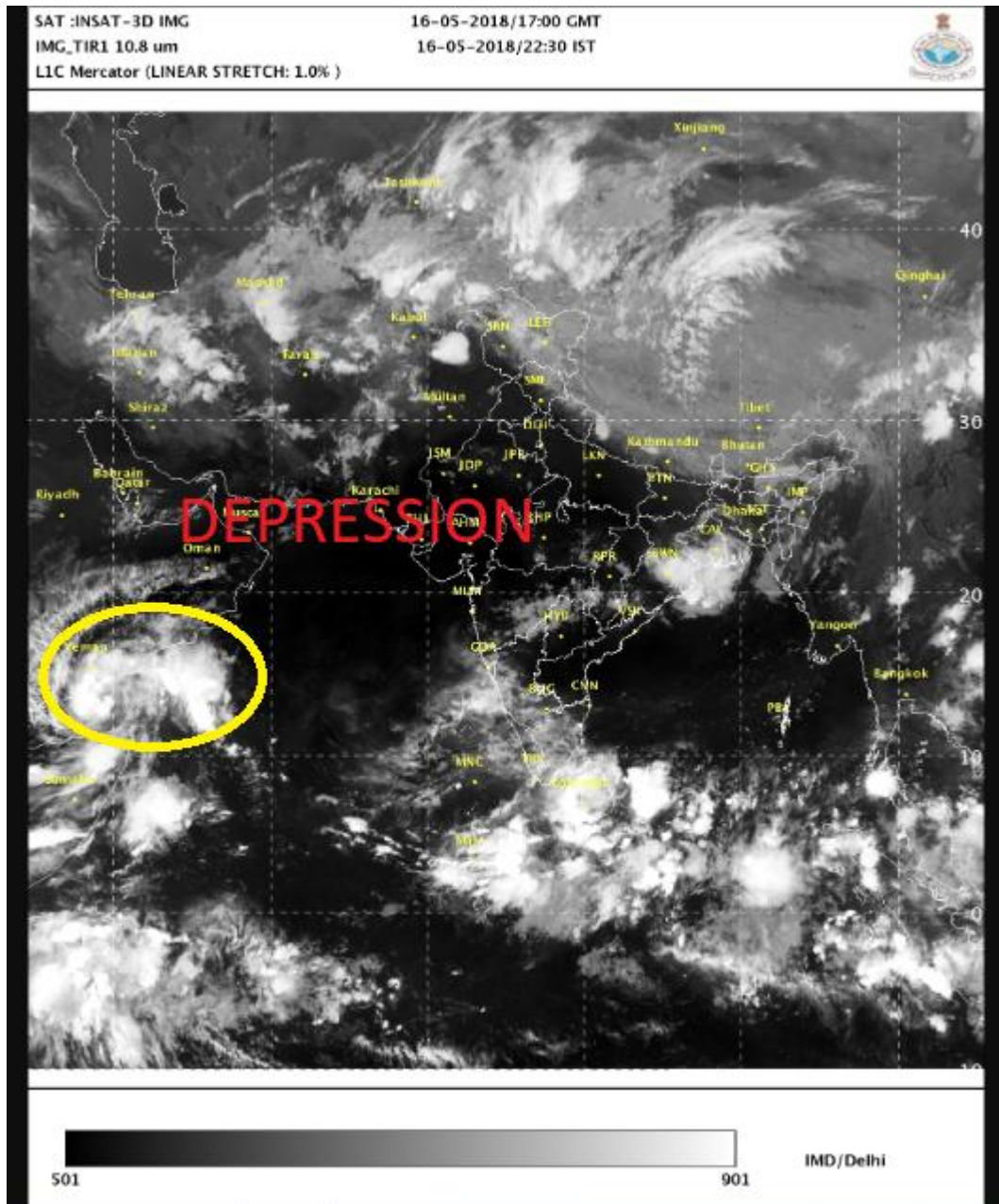
### **(c) Fishermen warning**

Fishermen are advised not to venture into Gulf of Aden and adjoining areas of westcentral and southwest Arabian Sea during the next 48 hrs.

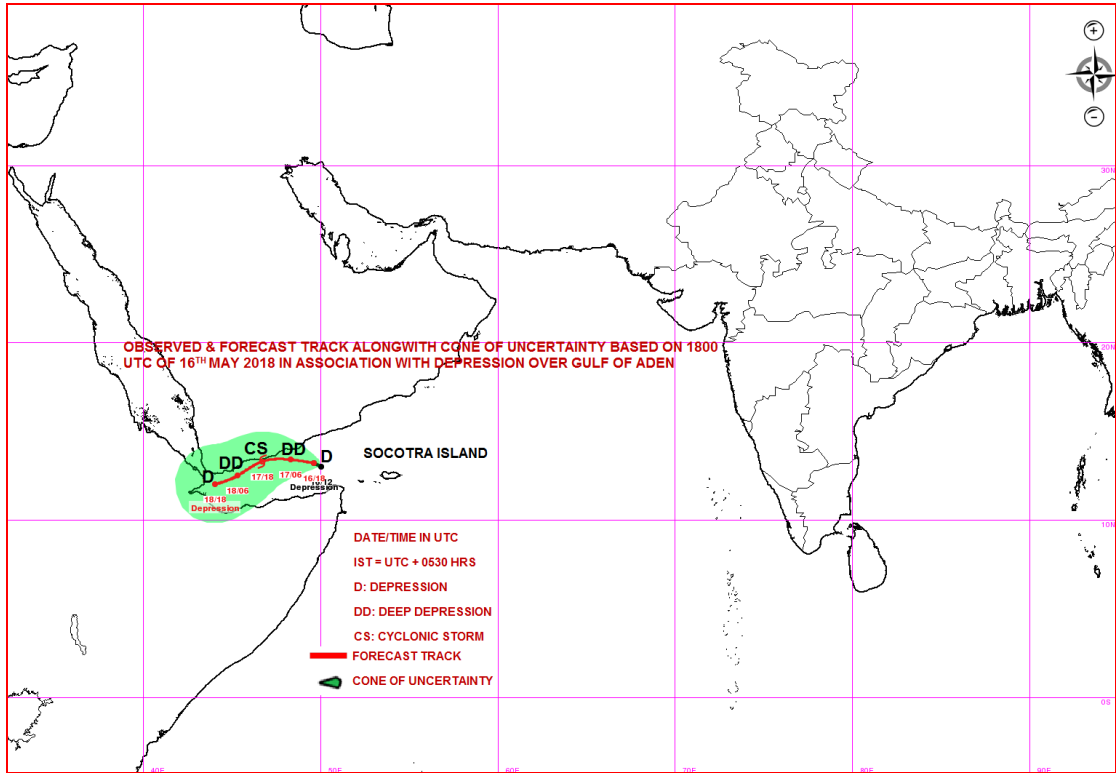
*The next bulletin will be issued at 0830 hrs IST of 17<sup>th</sup> May 2018.*

**(DR Pattanaik)**  
**Scientist-E, RSMC, New Delhi**

*Copy to: CRS, Pune/ ACWC Chennai/ Mumbai/MC Goa/Thiruvananthapuram/Bengaluru/CWC Ahmedabad.*



**Spatial rainfall distribution: Isolated: <25%, A few: 26-50%, Many: 51-75%, Most: 76-100%**  
**Rainfall amount (mm): Heavy rain: 64.5 – 115.5, Very heavy rain: 115.6 – 204.4, Extremely heavy rain: 204.5 or more.**



**Spatial rainfall distribution: Isolated: <25%, A few: 26-50%, Many: 51-75%, Most: 76-100%**  
**Rainfall amount (mm): Heavy rain: 64.5 – 115.5, Very heavy rain: 115.6 – 204.4, Extremely heavy rain: 204.5 or more.**